

Product information



TRAPPC2L, 1-139aa

Human, His-tagged, Recombinant, *E.coli*

Cat. No. IBATGP2195

Full name: Trafficking protein particle complex subunit 2-like protein

NCBI Accession No.: NP_001252685

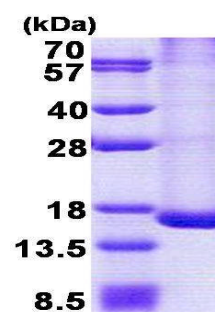
Description: TRAPPC2L may play a role in vesicular transport from endoplasmic reticulum to Golgi. This protein belongs to the TRAPP small subunits family and is expressed in testis, liver, bladder, lung, spleen and brain, several cell lines and primary chondrocytes cell line. Recombinant human TRAPPC2L protein, fused to His-tag at N-terminus, was expressed in *E.coli* and purified by using conventional chromatography techniques.

Form: Liquid. In 20mM Tris-HCl buffer (pH 8.0) containing 0.2M NaCl,
50% glycerol, 2mM DTT

Molecular Weight: 18.4 kDa (162aa), confirmed by MALDI-TOF

Purity: > 90% by SDS - PAGE

Concentration: 0.5 mg/ml (determined by Bradford assay)



15% SDS-PAGE (3ug)

Sequences of amino acids:

MGSSHHHHH SSGLVPRGSH MGSMAVCI AV IAKENYPLYI RSTPTENELK FHYMVHTSLD VVDEKISAMG KALVDQRELY LGLLYPTEDY
KVYGYVTNSK VKFVMVDSS NTALRDNEIR SMFRKLHNSY TDVMCNPFFYN PGDRIQSR AF DNMVTSMMIQ VC

General references:

Scrivens P.J., *et al.* (2009) *Traffic*. 10:724-736

Scrivens P.J., *et al.* (2011) *Mol. Biol. Cell*. 22:2083-2093

Storage: Can be stored at +4°C short term (1-2 weeks). For long term storage, aliquot and store at -20°C or -70°C.
Avoid repeated freezing and thawing cycles.

For research use only. This product is not intended or approved for human, diagnostics or veterinary use.



Manufactured for:

Immuno-Biological Laboratories, Inc. (IBL-America)
8201 Central Ave. NE, Suite P, Minneapolis, Minnesota 55432, USA
Phone: (888) 523-1246 Fax: (763) 780-2988
Email: info@ibl-america.com Web: www.ibl-america.com