

# Product information



## RPS12, 1-132aa

Human, His-tagged, Recombinant, *E.coli*

Cat. No. IBATGP2124

**Full name:** 40S ribosomal protein S12

**NCBI Accession No.:** NP\_001007

**Synonyms:** S12

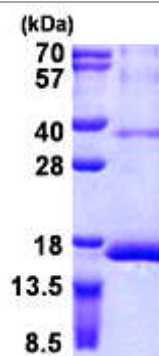
**Description:** RPS12 is a ribosomal protein that is a component of the 40S subunit. The protein belongs to the S12E family of ribosomal proteins. It is located in the cytoplasm. Increased expression of this gene in colorectal cancers compared to matched normal colonic mucosa has been observed. As is typical for genes encoding ribosomal proteins, there are multiple processed pseudogenes of this gene dispersed through the genome. Recombinant human RPS12 protein, fused to His-tag at N-terminus, was expressed in *E.coli* and purified by using conventional chromatography techniques.

**Form:** Liquid. In 20mM Tris-HCl buffer (pH 8.0) containing 0.15M NaCl, 30% glycerol.

**Molecular Weight:** 16.9kDa (155aa), confirmed by MALDI-TOF

**Purity:** > 85% by SDS - PAGE

**Concentration:** 0.25 mg/ml (determined by Bradford assay)



15% SDS-PAGE (3ug)

### Sequences of amino acids:

MGSSHHHHH SSGLVPRGSH MGSMAEEGIA AGGVMDVNTA LQEVLTAL I HDGLARGIRE AAKALDKRQA HLCVLASNCD EPMYVKLVEA  
LCAEHQINLI KVDDNKKLGE WVGLCKIDRE GKPRKVVGCS CVVVKDYGKE SQAQDVIEEY FKCKK

### General references:

Yoshihama M, Uechi T, *et al.* (2002). *Genome Res.*12(3):379-90.

Yu Y, Ji H, Doudna JA, *et al.* (2005). *Protein Sci.* 14(6):1438-46.

**Storage:** Can be stored at +4°C short term (1-2 weeks). For long term storage, aliquot and store at -20°C or -70°C. Avoid repeated freezing and thawing cycles.

**For research use only. This product is not intended or approved for human, diagnostics or veterinary use.**



Manufactured for:

Immuno-Biological Laboratories, Inc. (IBL-America)  
8201 Central Ave. NE, Suite P, Minneapolis, Minnesota 55432, USA  
Phone: (888) 523-1246 Fax.: (763) 780-2988  
Email: [info@ibl-america.com](mailto:info@ibl-america.com) Web: [www.ibl-america.com](http://www.ibl-america.com)