

Product information



ARMC10, 28-308aa

Human, His-tagged, Recombinant, *E.coli*

Cat. No. IBATGP2084

Full name: Armadillo repeat-containing protein 10 isoform b

NCBI Accession No.: NP_001154481

Synonyms: PNAS-112, PNAS112, PSEC0198, SVH

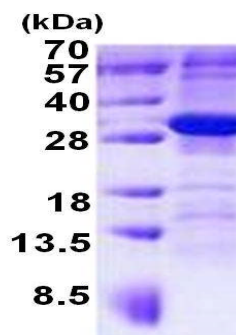
Description: AMRC10 is a protein that contains an armadillo repeat and transmembrane domain. The protein decreases the transcriptional activity of the tumor suppressor protein p53 through direct interaction with the DNA-binding domain of p53, and may play a role in cell growth and survival. Upregulation of this gene may play a role in hepatocellular carcinoma. Recombinant human AMRC10 protein, fused to His-tag at N-terminus, was expressed in *E.coli* and purified by using conventional chromatography techniques.

Form: Liquid. In 20mM Tris-HCl buffer (pH 8.0) containing 0.15M NaCl, 10% glycerol, 1mM DTT

Molecular Weight: 33.6kDa (304aa) confirmed by MALDI-TOF

Purity: > 85% by SDS - PAGE

Concentration: 1mg/ml (determined by Bradford assay)



15% SDS-PAGE (3ug)

Sequences of amino acids:

MGSSHHHHH SSGLVPRGSH MGSTRGRRRG DRELGIRSSK SAEDLTDGSY DDVLNAEQLQ KLLYLLESTE DPVIERAL I TLGNNAAFSV
NQA I IRELGG IPIVANKINH SNQSIKEKAL NALNNLSVNV ENQIKIKIYI SQVCEDVFSG PLNSAVQLAG LTLTNTMTVT NDHQHMLHSY
ITDLFQVLLT GNGNTKVQVL KLLLNLSENP AMTEGLLRAQ VDSSFLSLYD SHVAKEILLR VLTLFQNIKN CLKIEGHLAV QPTFTEGSLF
FLLHGEECAQ KIRALVDHHD AEVKEKVVTI IPKI

General references:

Zhou, X., *et al.* (2007) *FEBS Lett.* 581 (25), 4943-4948

Huang, R., *et al.* (2003) *Cancer Res.* 63 (13), 3775-3782

Storage: Can be stored at +4°C short term (1-2 weeks). For long term storage, aliquot and store at -20°C or -70°C.
Avoid repeated freezing and thawing cycles.

For research use only. This product is not intended or approved for human, diagnostics or veterinary use.



Manufactured for:

Immuno-Biological Laboratories, Inc. (IBL-America)
8201 Central Ave. NE, Suite P, Minneapolis, Minnesota 55432, USA
Phone: (888) 523-1246 Fax.: (763) 780-2988
Email: info@ibl-america.com Web: www.ibl-america.com