

Product information



CCL2, 24-148aa

Mouse, His-tagged, Recombinant, *E.coli*

Cat. No. IBATGP2074

Full name: C-C motif chemokine 2

NCBI Accession No.: NP_035463

Synonyms: AI323594, HC11, JE, MCAF, MCP-1, MCP1, Scya2, Sigje, SMC-CF

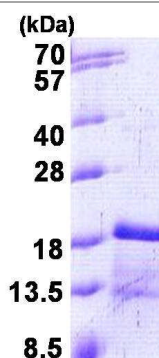
Description: Chemokine (C-C motif) ligand 2 (CCL2) is a small cytokine belonging to the CC chemokine family that is also known as monocyte chemoattractant protein-1 (MCP-1). CCL2 recruits monocytes, memory T cells, and dendritic cells to sites of tissue injury and infection. It has been implicated in the pathogenesis of diseases characterized by monocytic infiltrates, like psoriasis, rheumatoid arthritis and atherosclerosis. It binds to chemokine receptors CCR2 and CCR4. Recombinant mouse CCL2 protein, fused to His-tag at N-terminus, was expressed in *E.coli* and purified by using conventional chromatography techniques.

Form: Liquid. In PBS (pH 7.4) containing 10% glycerol.

Molecular Weight: 16 kDa (146aa) confirmed by MALDI-TOF

Purity: > 90% by SDS - PAGE

Concentration: 0.25 mg/ml (determined by Bradford assay)



15% SDS-PAGE (3ug)

Sequences of amino acids:

MGSSHHHHHH SSGLVPRGSH MQPDAVNAPL TCCYSFTSKM IPMSRLESYK RITSSRCPE AVVFVTKLKR EVCADPKKEW VQTYIKNLDR
NQMRSEPTTL FKTASALRSS APLNVKLTRK SEANASTTFS TTTSSSTVGV TSVTVN

General references:

Foresti ML, Arisi GM, *et al.* (2009). *J Neuroinflammation*. 6:40.

Semple BD, Bye N, *et al.* (2010). *J Cereb Blood Flow Metab*. 30(4):769-82.

Storage: Can be stored at +4°C short term (1-2 weeks). For long term storage, aliquot and store at -20°C or -70°C.
Avoid repeated freezing and thawing cycles.

For research use only. This product is not intended or approved for human, diagnostics or veterinary use.



Manufactured for:

Immuno-Biological Laboratories, Inc. (IBL-America)
8201 Central Ave. NE, Suite P, Minneapolis, Minnesota 55432, USA
Phone: (888) 523-1246 Fax.: (763) 780-2988
Email: info@ibl-america.com Web: www.ibl-america.com