

# Product information



## GIP, 22-153aa

Human, His-tagged, Recombinant, *E.coli*

Cat. No. IBATGP2061

**Full name:** Gastric inhibitory polypeptide

**NCBI Accession No.:** AAH69100

**Description:** GIP, also known as glucose-dependent insulinotropic polypeptide, is an important insulin-releasing hormone of the enteroinsular axis that has a functional profile of possible therapeutic value for type 2 diabetes. This protein is an important incretin hormone released into the circulation from endocrine K-cells of the duodenum and jejunum after ingestion of food<sup>1</sup>. It was evaluated for their ability to elevate cellular cAMP production and stimulate insulin secretion. It also promotes plasma triglyceride clearance in response to oral fat loading. In liver, GIP has been shown to enhance insulin-dependent inhibition of glycogenolysis. Recombinant human GIP protein, fused to His-tag at N-terminus, was expressed in *E.coli* and purified by using conventional chromatography.

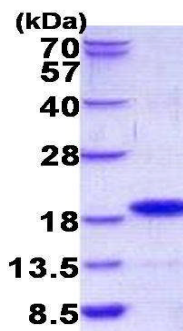
**Form:** Liquid. 20mM Tris-HCl buffer (pH8.0) containing 50% glycerol

0.1M NaCl, 2mM DTT

**Molecular Weight:** 17.3 kDa(155aa) confirmed by MALDI-TOF

**Purity:** > 90% by SDS - PAGE

**Concentration:** 0.25 mg/ml (determined by Bradford assay)



15% SDS-PAGE (3ug)

### Sequences of amino acids:

MGSSHHHHH SSGLVPRGSH MGSEKKEGHF SALPSLPVGS HAKVSSPQPR GPRYAEGTFI SDYSIAMDKI HQQDFVNWLL AQKGKKNQWK  
HNITQREARA LELAGQANRK EEEAVEPQSS PAKNPSDEDL LRDLLIQELL ACLLDQTNLG RLRSR

### General references:

O'Harte FP. *et al.* (1999) *Diabetes*. 48:758-765

Gault VA. *et al.* (2002) *Biosci Rep*. 22:523-528.

**Storage:** Can be stored at +4°C short term (1-2 weeks). For long term storage, aliquot and store at -20°C or -70°C.

Avoid repeated freezing and thawing cycles.

**For research use only. This product is not intended or approved for human, diagnostics or veterinary use.**



Manufactured for:

Immuno-Biological Laboratories, Inc. (IBL-America)  
8201 Central Ave. NE, Suite P, Minneapolis, Minnesota 55432, USA

Phone: (888) 523-1246 Fax.: (763) 780-2988

Email: [info@ibl-america.com](mailto:info@ibl-america.com) Web: [www.ibl-america.com](http://www.ibl-america.com)