

Product information



CRLF2, 23-231aa

Human, His-tagged, Recombinant, *E.coli*

Cat. No. IBATGP2022

Full name: Cytokine receptor-like factor 2 isoform 1 precursor

NCBI Accession No.: NP_071431

Synonyms: CRL2, CRLF2Y, TSLPR

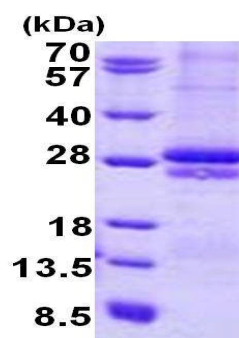
Description: CRLF2 is a receptor for thymic stromal lymphopoietin (TSLP). Together with the interleukin 7 receptor (IL7R), the protein and TSLP activate STAT3, STAT5, and JAK2 pathways, which control processes such as cell proliferation and development of the hematopoietic system. Two transcript variants encoding different isoforms have been found for this gene. Recombinant human CRLF2 protein, fused to His-tag at N-terminus, was expressed in *E.coli*.

Form: Liquid. In 20mM Tris-HCl buffer (pH 8.0) containing 0.4M UREA, 10% glycerol

Molecular Weight: 26.6 kDa (232aa)

Purity: > 85% by SDS - PAGE

Concentration: 1 mg/ml (determined by Bradford assay)



15% SDS-PAGE (3ug)

Sequences of amino acids:

MGSSHHHHH SSGLVPRGSH MGSQGGAEG VQIQIIFYNL ETVQVTWNAS KYSRTNLTFH YRFNGDEAYD QCTNYLLQEG HTSGCLLDAE
QRDDILYFSI RNGTHPVFTA SRWMVYYLKP SSPKHVRFWS HQDAVTVTCS DLSYGDLLYE VQYRSPFDTE WQSKQENTCN VTIEGLDAEK
CYSFWVRVKA MEDVYGPDTY PSDWSEVTCW QRGEIRDACA ETPTPKPKL SK

General references:

Chen, I.M., *et al.* (2012) *Blood* 119 (15), 3512-3522

Haslam, K., *et al.* (2011) *Int J Lab Hematol* 33 (6), E17-E19

Storage: Can be stored at +4°C short term (1-2 weeks). For long term storage, aliquot and store at -20°C or -70°C. Avoid repeated freezing and thawing cycles.

For research use only. This product is not intended or approved for human, diagnostics or veterinary use.



Manufactured for:

Immuno-Biological Laboratories, Inc. (IBL-America)
8201 Central Ave. NE, Suite P, Minneapolis, Minnesota 55432, USA
Phone: (888) 523-1246 Fax: (763) 780-2988
Email: info@ibl-america.com Web: www.ibl-america.com