

Product information



GEMIN6, 1-167aa

Human, His-tagged, Recombinant, *E.coli*

Cat. No. IBATGP2004

Full name: Gem-associated protein 6

NCBI Accession No.: NP_079051

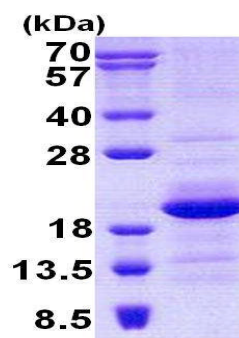
Description: GEMIN6 is part of a large macromolecular complex, localized to both the cytoplasm and the nucleus, that plays a role in the cytoplasmic assembly of small nuclear ribonucleoproteins (snRNPs). Other members of this complex includes SMN, GEMIN2, GEMIN3, GEMIN4, and GEMIN5. Recombinant human GEMIN6 protein, fused to His-tag at N-terminus, was expressed in *E.coli* and purified by using conventional chromatography techniques.

Form: Liquid. In 20mM Tris-HCl buffer (pH 8.0) containing 0.15M NaCl, 30% glycerol, 1mM DTT

Molecular Weight: 21.9 kDa (190aa) confirmed by MALDI-TOF

Purity: > 90% by SDS - PAGE

Concentration: 0.5mg/ml (determined by Bradford assay)



15% SDS-PAGE (3ug)

Sequences of amino acids:

MGSSHHHHHH SSGLVPRGSH MGSMSSEWMKK GPLEWQDYIY KEVRVTASEK NEYKGWVLT DPVSANIVLV NFLEDGSM SV TGIMGHAVQT
VETMNEGDHR VREKLMHLFT SGDC KAYSPE DLEERKNSLK KWLEKNHIPI TEQGDAPRTL CVAGVLTIDP PYGPENCSSS NEIILSRVQD
LIEGHLTASQ

General references:

Carissimi,C., *et al.* (2006) *J. Biol. Chem.* 281 (48), 37009-37016

Pellizzoni,L., *et al.* (2002) *J. Biol. Chem.* 277 (9), 7540-7545

Storage: Can be stored at +4°C short term (1-2 weeks). For long term storage, aliquot and store at -20°C or -70°C.
Avoid repeated freezing and thawing cycles.

For research use only. This product is not intended or approved for human, diagnostics or veterinary use.



Manufactured for:

Immuno-Biological Laboratories, Inc. (IBL-America)
8201 Central Ave. NE, Suite P, Minneapolis, Minnesota 55432, USA

Phone: (888) 523-1246 Fax.: (763) 780-2988

Email: info@ibl-america.com Web: www.ibl-america.com