

Product information



EDN2, 25-178aa

Human, His-tagged, Recombinant, *E.coli*

Cat. No. IBATGP2001

Full name: Endothelin 2

NCBI Accession No.: NP_001947

Synonyms: ET2, PPET2

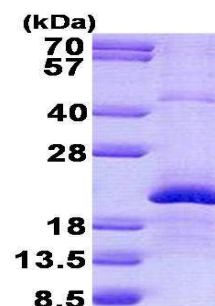
Description: EDN2 is a member of the endothelin protein family of secretory vasoconstrictive peptides. The preproprotein is processed to a short mature form which functions as a ligand for the endothelin receptors that initiate intracellular signaling events. This protein is involved in a wide range of biological processes, such as hypertension and ovulation. Recombinant human EDN2 protein, fused to His-tag at N-terminus, was expressed in *E.coli*.

Form: Liquid. In 20mM Tris-HCl buffer (pH 8.0) containing 0.4M urea, 10% glycerol

Molecular Weight: 19.9 kDa (177aa)

Purity: > 85% by SDS - PAGE

Concentration: 1 mg/ml (determined by Bradford assay)



15% SDS-PAGE (3ug)

Sequences of amino acids:

MGSSHHHHH SSGLVPRGSH MGSQAAATLE QPASSSHAQG THRLRLRCSC SSWLDKECVY FCHLDIIWVN TPEQTAPYGL GNPPRRRRRS
LPRRCQCSSA RDPACATFCL RRPWTEAGAV PSRKSPADVF QTGKTGATTG ELLQRLRDIS TVKSLFAKRQ QEAMREPRST HSRWRKR

General references:

Bourgeois C., *et al.* (1997) *J. Clin. Endocrinol. Metab.* 82:3116-3123

Ohkubo S., *et al.* (1990) *FEBS Lett.* 274:136-140

Storage: Can be stored at +4°C short term (1-2 weeks). For long term storage, aliquot and store at -20°C or -70°C.
Avoid repeated freezing and thawing cycles.

For research use only. This product is not intended or approved for human, diagnostics or veterinary use.



Manufactured for:

Immuno-Biological Laboratories, Inc. (IBL-America)
8201 Central Ave. NE, Suite P, Minneapolis, Minnesota 55432, USA
Phone: (888) 523-1246 Fax.: (763) 780-2988
Email: info@ibl-america.com Web: www.ibl-america.com