

Product information



KRT20, 1-424aa

Human, His-tagged, Recombinant, *E.coli*

Cat. No. IBATGP1960

Full name: Keratin, type I cytoskeletal 20

NCBI Accession No.: NP_061883

Synonyms: CD20; CK-20; CK20; K20; KRT21

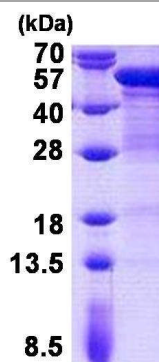
Description: KRT20 is a member of the keratin family. The keratins are intermediate filament proteins responsible for the structural integrity of epithelial cells and are subdivided into cytokeratins and hair keratins. The type I cytokeratins consist of acidic proteins which are arranged in pairs of heterotypic keratin chains. KRT20 is a major cellular protein of mature enterocytes and goblet cells and is specifically expressed in the gastric and intestinal mucosa. Recombinant human KRT20 protein, fused to His-tag at N-terminus, was expressed in *E.coli*.

Form: Liquid. In 20mM Tris-HCl buffer (pH 8.0) containing 0.4M Urea, 10% glycerol

Molecular Weight: 50.9 kDa (447aa)

Purity: > 85% by SDS - PAGE

Concentration: 0.5 mg/ml (determined by Bradford assay)



15% SDS-PAGE (3ug)

Sequences of amino acids:

MGSSHHHHHH SSGLVPRGSH MGSMDFSRRS FHRSLSSSLQ APVVSTVGMQ RLGTTPSVYG GAGGRGIRIS NSRHTVNYGS DLTGGGDLFV
GNEKMAMQNL NDRLASYLEK VRTLEQSNK LEVQIKQWYE TNAPRAGR DY SAYYRQIEEL RSQIKDAQLQ NARCVLQIDN AKLAAEDFRL
KYETERGIRL TVEADLQGLN KVFDDLT LHK TDLEIQIEEL NKDLALLKKE HQEEVDGLHK HLGNTVNVEV DAAPGLNLGV IMNEMRQKYE
VMAQKNLQEA KEQFERQTAV LQQQVTVNTE ELKGTEVQLT ELRRTSQSLE IELQSHLSMK ESLEHTLEET KARYSSQLAN LQSLSSLEA
QLMQIRSNME RQNNYHILL DIKTRLEQEI ATYRRLLEGE DVKTTEYQLS TLEERDIKKT RKIKTVQEV VDGKVSSEV KEVEENI

General references:

Schweizer J, Bowden PE, *et al.* (2006). *J Cell Biol.*174(2):169-74.

Storage: Can be stored at +4°C short term (1-2 weeks). For long term storage, aliquot and store at -20°C or -70°C.

Avoid repeated freezing and thawing cycles.

For research use only. This product is not intended or approved for human, diagnostics or veterinary use.



Manufactured for:

Immuno-Biological Laboratories, Inc. (IBL-America)
8201 Central Ave. NE, Suite P, Minneapolis, Minnesota 55432, USA

Phone: (888) 523-1246 Fax.: (763) 780-2988

Email: info@ibl-america.com Web: www.ibl-america.com