

# Product information



## CTSS, 17-331aa

Human, His-tagged, Recombinant, *E.coli*

Cat. No. IBATGP1951

**Full name:** Cathepsin S

**NCBI Accession No.:** NP\_004070

**Synonyms:** MGC3886

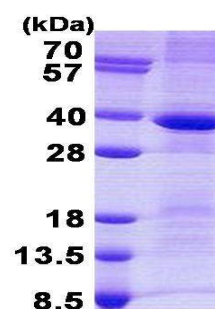
**Description:** Cathepsin S, also known as CTSS, is a member of the peptidase C1 family. This protein is a lysosomal cysteine proteinase that may participate in the degradation of antigenic proteins to peptides for presentation on MHC class II molecules. CTSS can function as an elastase over a broad pH range in alveolar macrophages. Recombinant human CTSS protein, fused to His-tag at N-terminus, was expressed in *E.coli*.

**Form:** Liquid. In 20mM Tris-HCl buffer (pH 8.0) containing 0.4M urea, 10% glycerol

**Molecular Weight:** 38.1 kDa (336aa)

**Purity:** > 85% by SDS - PAGE

**Concentration:** 1 mg/ml (determined by Bradford assay)



15% SDS-PAGE (3ug)

### Sequences of amino acids:

MGSSHHHHHH SSGLVPRGSH MLHKDPTLD HHWHLWKKTY GKQYKEKNEE AVRRLIWEKN LKFVMLHNLE HSMGMHSYDL GMNHLGDMTS  
EEVMSLMSSL RVPSQWQRNI TYKSNPNWIL PDSVDWREKG CVTEVKYQGS CGACWAFSAV GALEAQLKLN TGKLVSLSAQ NLVCSTEKY  
GNKGCNGGFM TTAFQYI IDN KGIDSDASYP YKAMDQKQCQY DSKYRAATCS KYTELPYGRE DVLKEAVANK GPVSVGVDAR HPSFFLYRSG  
YYYEPSCTQN VNHGVLVVG Y GDLNGKEYWL VKNSWGHNFG EEGYIRMAR N KGNHCGIASF PSYPEI

### General references:

Inagaki H., *et al.* (2007) *J. Med. Chem.* 50:2693-2699

Fengler A., *et al.* (1998) *Protein Eng.* 11:1007-1013

**Storage:** Can be stored at +4°C short term (1-2 weeks). For long term storage, aliquot and store at -20°C or -70°C. Avoid repeated freezing and thawing cycles.

**For research use only. This product is not intended or approved for human, diagnostics or veterinary use.**



Manufactured for:

Immuno-Biological Laboratories, Inc. (IBL-America)  
8201 Central Ave. NE, Suite P, Minneapolis, Minnesota 55432, USA  
Phone: (888) 523-1246 Fax.: (763) 780-2988  
Email: [info@ibl-america.com](mailto:info@ibl-america.com) Web: [www.ibl-america.com](http://www.ibl-america.com)