

Product information



CD2, 25-209aa

Human, His-tagged, Recombinant, *E.coli*

Cat. No. IBATGP1878

Full name: T-cell surface antigen CD2

NCBI Accession No.: NP_001758

Synonyms: SRBC, T11

Description: CD2, also known as T-cell surface antigen T11/Leu-5, is a cell adhesion molecule found on the surface of T cells and natural killer (NK) cells. It interacts with other adhesion molecules, such as lymphocyte function-associated antigen-3 (LFA-3/CD58) in humans, or CD48 in rodents, which are expressed on the surfaces of other cells. In addition to its adhesive properties, CD2 also acts as a co-stimulatory molecule on T and NK cells. CD2 is a specific marker for T cells and NK cells, and can therefore be used in immunohistochemistry to identify the presence of such cells in tissue sections. The great majority of T cell lymphomas and leukaemias also express CD2, making it possible to use the presence of the antigen to distinguish these conditions from B cell neoplasms. Recombinant human CD2 protein, fused to His-tag at N-terminus, was expressed in *E.coli*.

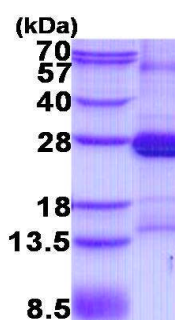
Form: Liquid. 20mM Tris-HCl buffer (pH8.0) containing 10% glycerol

0.4M Urea

Molecular Weight: 23.8 kDa (209aa)

Purity: > 85% by SDS - PAGE

Concentration: 1 mg/ml (determined by Bradford assay)



15% SDS-PAGE (3ug)

Sequences of amino acids:

MGSSHHHHH SSGLVPRGSH MGSMEITNA LETWGALGQD INLDIPSFQM SDDIDDIKWE KTSKDKKIAQ FRKEKETFE KDTYKLFKNG
TLKIKHLKTD DQDIYKYSIY DTKGKNVLEK IFDLKIQERV SKPKISWTCT NTTLTCEVMN GTDPELNLYQ DGKHLKLSQR VITHKWTSL
SAFKCTAGN KVSKESSVEP VSCPEKGLD

General references:

Wilkins AL. *et al.* (2003) *Curr Protein Pept Sci.* 4:367-373.

Yang JJ. *et al.* (2001) *Curr Protein Pept Sci.* 2:1-17.

Storage: Can be stored at +4°C short term (1-2 weeks). For long term storage, aliquot and store at -20°C or -70°C.

Avoid repeated freezing and thawing cycles.

For research use only. This product is not intended or approved for human, diagnostics or veterinary use.



Manufactured for:

Immuno-Biological Laboratories, Inc. (IBL-America)
8201 Central Ave. NE, Suite P, Minneapolis, Minnesota 55432, USA
Phone: (888) 523-1246 Fax: (763) 780-2988
Email: info@ibl-america.com Web: www.ibl-america.com