

Product information



CFD, 26-253aa

Human, His-tagged, Recombinant, *E.coli*

Cat. No. IBATGP1877

Full name: Complement factor D

NCBI Accession No.: NP_001919

Synonyms: DF, AND, PFD, ADIPSIN

Description: CFD, also known as adipsin, is involved in the alternative complement pathway of the complement system where it cleaves factor B. This protein is a member of the trypsin family of peptidases. It is a component of the alternative complement pathway best known for its role in humoral suppression of infectious agents. It is also a serine protease that is secreted by adipocytes into the bloodstream. Finally, it has a high level of expression in fat, suggesting a role for adipose tissue in immune system biology. Recombinant human CFD protein, fused to His-tag at N-terminus, was expressed in *E.coli*.

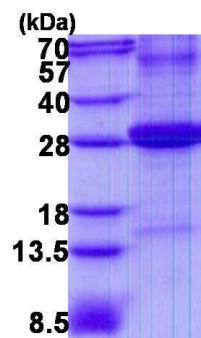
Form: Liquid. 20mM Tris-HCl buffer (pH8.0) containing 10% glycerol

0.4M Urea

Molecular Weight: 26.6 kDa (249aa)

Purity: > 85% by SDS - PAGE

Concentration: 1 mg/ml (determined by Bradford assay)



15% SDS-PAGE (3ug)

Sequences of amino acids:

MGSSHHHHH SSGLVPRGSH MILGGREAEA HARPYMASVQ LNGAHLGGV LVAEQWVLSA AHCLEDAADG KVQVLLGAHS LSQPEPSKRL
YDVLRAVPHD DSQPDIDHD LLLLQLSEKA TLGPAVRPLP WQRVDRDVAP GTLCDVAGWG IVNHAGRRPD SLQHVLLPVL DRATCNRRTH
HDGAI TERLM CAESNRDSC KGDSSGGLVC GGVLEGVVTS GSRVCGNRKK PGIYTRVASY AAWIDSVLA

General references:

Narayana SV. *et al.* (1994) *J Mol Biol.* 235:695-708.

Ronti T. *et al.* (2006) *Clin Endocrinol (Oxf).* 64:355-365.

Storage: Can be stored at +4°C short term (1-2 weeks). For long term storage, aliquot and store at -20°C or -70°C.
Avoid repeated freezing and thawing cycles.

For research use only. This product is not intended or approved for human, diagnostics or veterinary use.



Manufactured for:

Immuno-Biological Laboratories, Inc. (IBL-America)
8201 Central Ave. NE, Suite P, Minneapolis, Minnesota 55432, USA
Phone: (888) 523-1246 Fax.: (763) 780-2988
Email: info@ibl-america.com Web: www.ibl-america.com