

# Product information



## HFE, 23-306aa

Human, His-tagged, Recombinant, *E.coli*

Cat. No. IBATGP1869

**Full name:** Hereditary hemochromatosis protein

**NCBI Accession No.:** NP\_000401

**Synonym:** HFE1, HH, HLA-H, MVCD7, TFQTL2

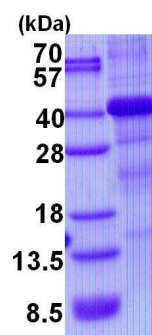
**Description:** HFE, also known as HLA-H, belongs to the MHC class I family. This protein contains 1 Ig-like C1-type (immunoglobulin-like) domain. HFE is a membrane protein that is similar to MHC class I-type proteins and associates with beta-2 microglobulin (beta2M). It is thought that this protein functions to regulate iron absorption by regulating the interaction of the transferrin receptor (TFR) with transferrin. It binds to transferrin receptor (TFR) and reduces its affinity for iron-loaded transferrin. Recombinant human HFE protein, fused to His-tag at N-terminus, was expressed in *E.coli*.

**Form:** Liquid. In 20mM Tris-HCl buffer (pH 8.0) containing 0.4M Urea, 10% glycerol

**Molecular Weight:** 35.7kDa (308aa)

**Purity:** > 85% by SDS - PAGE

**Concentration:** 1 mg/ml (determined by Bradford assay)



15% SDS-PAGE (3ug)

### Sequences of amino acids:

MGSSHHHHH SSGLVPRGSH MGSMRLLRSH SLHYLFMGAS EQDLGLSLFE ALGYVDDQLF VFYDHESRRV EP RTPWVSSR ISSQMWLQLS  
QSLKGWDHMF TVDFWTIMEN HNHSKESHTL QVILGCEMQE DNSTEGYWKY GYDGGQHLEF CPDTLDWRAA EPRAWPTKLE WERHKIRARQ  
NRAYLERDCP AQLQQLELGLG RGVLDQQVPP LVKVTHHVTS SVTTLRCRAL NYYPQNI TMK WLKDKQPMDA KEFEPKDVLP NGDGT YQGW I  
TLAVPPGEEQ RYTCQVEHPG LQQPLIVIWE PSPSGTLV

### General references:

Feder J.N., *et al.* (1998) *Proc. Natl. Acad. Sci. U.S.A.* 95:1472-1477

West, A P, *et al.* (2000) *J. Biol. Chem.* (UNITED STATES) **275** (49): 38135–8.

**Storage:** Can be stored at +4°C short term (1-2 weeks). For long term storage, aliquot and store at -20°C or -70°C.  
Avoid repeated freezing and thawing cycles.

**For research use only. This product is not intended or approved for human, diagnostics or veterinary use.**



Manufactured for:

Immuno-Biological Laboratories, Inc. (IBL-America)  
8201 Central Ave. NE, Suite P, Minneapolis, Minnesota 55432, USA  
Phone: (888) 523-1246 Fax: (763) 780-2988  
Email: [info@ibl-america.com](mailto:info@ibl-america.com) Web: [www.ibl-america.com](http://www.ibl-america.com)