

Product information



PARD6B, 1-372aa

Human, His-tagged, Recombinant, *E.coli*

Cat. No. IBATGP1840

Full name: Partitioning defective 6 homolog beta

NCBI Accession No.: NP_115910

Synonyms: PAR6B

Description: Partitioning defective 6 homolog beta, also known as PARD6B, is a member of the PAR6 family and encodes a protein with a PSD95/Discs-large/ZO1 (PDZ) domain, an OPR domain and a semi-Cdc42/Rac interactive binding (CRIB) domain. Cellular asymmetry is critical for the development of multicellular organisms. PARD (partitioning-defective) proteins play important roles in asymmetric cell division and polarized growth, whereas Cdc42 and Rac mediate establishment of cell growth and polarity and contribute to oncogenic transformation by Ras. It is expressed in pancreas and in both adult and fetal kidney, and is weakly expressed in placenta and lung. Recombinant human PARD6B protein, fused to His-tag at N-terminus, was expressed in *E.coli*.

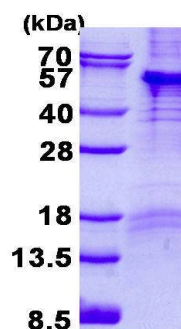
Form: Liquid. In 20mM Tris-HCl buffer (pH 8.0) containing 2M Urea,

20% glycerol, 0.2M NaCl

Molecular Weight: 43.6 kDa (395aa)

Purity: > 85% by SDS - PAGE

Concentration: 0.5 mg/ml (determined by Bradford assay)



15% SDS-PAGE (3ug)

Sequences of amino acids:

MGSSHHHHH SSGLVPRGSH MGSMMNRSHRH GAGSGCLGTM EVKSKFGAEF RRFSLERSKP GKFEIFYGLL QHVHKIPNVD VLVGYADIHG
DLLPINDDN YHKAVSTANP LLRIFIQKKE EADYSAFGTD TLIKKKNVLT NVLRPDNHRK KPHIVISMPQ DFRPVSSIID VDILPETHRR
VRLYKYGTEK PLGFYIRDGS SVRVTPHGLE KVPGFISRL VPGGLAQSTG LLAVNDEVLE VNGIEVSGKS LDQVTDMMIA NSRNLIITVR
PANQRNNVVR NSRTSGSSGQ STDNSLLGYP QQIEPSFEPE DEDSEEDDII IEDNGVPQQI PKAVPNTESL ESLTQIELSF ESGQNGFIPS
NEVSLAAIAS SSNTEFETHA PDQKLLEEDG TIITL

General references:

Joberty G., *et al.* (2000) *Nat Cell Biol.* 2:531-539.

Qiu R G., *et al.* (2000) *Curr Biol.* 10:697-707.

Storage: Can be stored at +4°C short term (1-2 weeks). For long term storage, aliquot and store at -20°C or -70°C.
Avoid repeated freezing and thawing cycles.

For research use only. This product is not intended or approved for human, diagnostics or veterinary use.



Manufactured for:

Immuno-Biological Laboratories, Inc. (IBL-America)
8201 Central Ave. NE, Suite P, Minneapolis, Minnesota 55432, USA
Phone: (888) 523-1246 Fax: (763) 780-2988
Email: info@ibl-america.com Web: www.ibl-america.com