

Product information



AMTN, 17-209aa

Human, His-tagged, Recombinant, *E.coli*

Cat. No. IBATGP1829

Full name: amelotin

NCBI Accession No.: NP_997722

Synonyms: UNQ689

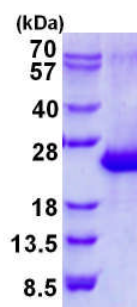
Description: AMTN belongs to the amelotin family. It could be a cell adhesion protein involved in the maturation of tooth enamel. AMTN is a recently discovered secreted enamel protein predominantly expressed during the maturation stage of enamel formation. It accumulates in a basal lamina-like structure at the interface between ameloblasts and enamel mineral and it co-localizes with another recently described enamel protein, odontogenic ameloblast-associated protein (ODAM). Recombinant human AMTN protein, fused to His-tag at N-terminus, was expressed in *E.coli* and purified by using conventional chromatography techniques.

Form: Liquid. In 20mM Tris-HCl buffer (pH 8.0) containing 0.2M NaCl, 20% glycerol, 2mM DTT

Molecular Weight: 22.2kDa (216aa) confirmed by MALDI-TOF

Purity: 90% by SDS - PAGE

Concentration: 0.5mg/ml (determined by Bradford assay)



15% SDS-PAGE (3ug)

Sequences of amino acids:

MGSSHHHHHH SSGLVPRGSH MGSLLPQLKPA LGLPPTKLAP DQGTLPNQQQ SNQVFPSLSL IPLTQMLTLG PDLHLLNPAA GMTPGTQTHP
LTLGGLNVQQ QLHPHVLPIF VTQLGAQGTI LSSEELPQIF TSLIHSFLFP GGILPQTSQAG ANPDVQDGSL PAGGAGVNPAA TQGTGAGRLP
TPSGTODDFA VTPPAGIQRS THAIEEATTE SANGIQ

General references:

Holcroft J, *et al.* (2011) *Eur J Oral Sci.* Dec;119 Suppl 1:301-6.

Storage: Can be stored at +4°C short term (1-2 weeks). For long term storage, aliquot and store at -20°C or -70°C. Avoid repeated freezing and thawing cycles.

For research use only. This product is not intended or approved for human, diagnostics or veterinary use.



Manufactured for:

Immuno-Biological Laboratories, Inc. (IBL-America)
8201 Central Ave. NE, Suite P, Minneapolis, Minnesota 55432, USA
Phone: (888) 523-1246 Fax.: (763) 780-2988
Email: info@ibl-america.com Web: www.ibl-america.com