

# Product information



## MRPL28, 56-256aa

Human, His-tagged, Recombinant, *E.coli*

Cat. No. IBATGP1802

**Full name:** 39S ribosomal protein L28, mitochondrial

**NCBI Accession No.:** NP\_006419

**Synonyms:** MAAT1, p15

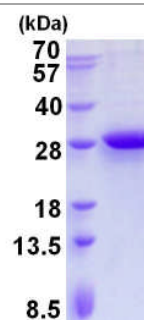
**Description:** MRPL28, also as known as 39S ribosomal protein L28, mitochondrial, is a mitochondrial protein that belongs to the ribosomal protein L28P family. Mammalian mitochondrial ribosomal proteins are encoded by nuclear genes and help in protein synthesis within the mitochondrion. Mitochondrial ribosomes (mitoribosomes) consist of a small 28S subunit and a large 39S subunit. MRPL28 potentially represents an important therapeutic reagent for HLA-A24 (A24) patients as this antigen is recognized by tumor-infiltrating lymphocyte (TIL) 1290, which targets the A24 serotype. This protein is found in a variety of normal tissues including spleen, testis, thymus, liver, kidney, brain, adrenal, lung and retinal tissue. Recombinant human MRPL28 protein, fused to His-tag at N-terminus, was expressed in *E.coli* and purified by using conventional chromatography techniques.

**Form:** Liquid. In 20mM Tris-HCl buffer (pH 8.5) containing 0.1M NaCl, 10% glycerol, 1mM DTT

**Molecular Weight:** 25.8kDa (222aa) confirmed by MALDI-TOF

**Purity:** > 95% by SDS - PAGE

**Concentration:** 1 mg/ml (determined by Bradford assay)



15% SDS-PAGE (3ug)

### Sequences of amino acids:

MGSSHHHHHH SSGLVPRGSH MNGQRERVED VP IPIYFPPE SQRGLWGEG WILGQIYANN DKLSKRLKKV WKPQLFEREF YSEILDKKFT  
VTVTMRTL DL IDEAYGLDFY ILKTPKEDLC SKFGMDLKRK MLLRLARQDP QLHPEDPERR AA IYDKYKEF AIPEEEAEWV GLTLEEAI EK  
QRLLLEEKDPV PLFKIYVAEL IQQLQQQALS EPAVVQKRAS GQ

### General references:

Koc EC, *et al.* (2001) *J Biol Chem* 276 (47): 43958–69.

Kawakami, Y., *et al.* (2000) *J.Immunother.* 23: 17-27.

**Storage:** Can be stored at +4°C short term (1-2 weeks). For long term storage, aliquot and store at -20°C or -70°C.  
Avoid repeated freezing and thawing cycles.

For research use only. This product is not intended or approved for human, diagnostics or veterinary use.



Manufactured for:  
Immuno-Biological Laboratories, Inc. (IBL-America)  
8201 Central Ave. NE, Suite P, Minneapolis, Minnesota 55432, USA  
Phone: (888) 523-1246 Fax.: (763) 780-2988  
Email: [info@ibl-america.com](mailto:info@ibl-america.com) Web: [www.ibl-america.com](http://www.ibl-america.com)