

Product information



ATG10, 1-220aa

Human, His-tagged, Recombinant, *E.coli*

Cat. No. IBATGP1742

Full name: Ubiquitin-like-conjugating enzyme ATG10

NCBI Accession No.: NP_113670

Synonyms: APG10, APG10L, pp12616

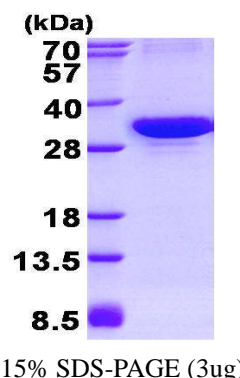
Description: Ubiquitin-like-conjugating enzyme ATG10, also known as ATG10, is a 220 amino acid protein that localizes to the cytoplasm and plays a role in autophagy, specifically functioning as an E2-like enzyme that provides Atg recognition sites during autophagosome synthesis. ATG10 has also been shown to interact with ATG12 in human embryonic kidney cells in the presence of ATG7. Deletion of the p arm of chromosome 5 leads to Cri du chat syndrome, while deletion of the q arm or of chromosome 5 altogether is common in therapy-related acute myelogenous leukemias and myelodysplastic syndrome. Recombinant human ATG10 protein, fused to His-tag at N-terminus, was expressed in *E.coli* and purified by using conventional chromatography techniques.

Form: Liquid. In 20mM Tris-HCl buffer (pH 8.0) containing 0.1M NaCl,
10% glycerol, 1mM DTT

Molecular Weight: 27.7 kDa (243aa) confirmed by MALDI-TOF

Purity: > 95% by SDS - PAGE

Concentration: 1 mg/ml (determined by Bradford assay)



Sequences of amino acids:

MGSSHHHHHH SSGLVPRGSH MGSMEEDF I GEKTFQRYCA EFIKHSQQIG DSWEWSPSKD CSDGYMCKIH FQIKNGSVMS HLGASTHGQT
CLPMEAFEL PLDDCEVIET AAASEVIKYE YHVLVYSCSYQ VPVLYFRASF LDGRPLTLKD IWEGVHECYK MRLQLGQPWDIT ITQQEHPILG
QPFFVLHPCK TNEFMTPLVK NSQKINKNVN YITSWLSIVG PVVGLNLPLS YAKATSQDER NVP

General references:

Nemoto T., *et al.* (2003) *J Bio Chem* 278:39517-39526

Shin J H., *et al.* (2009) *Mol Cells*. 27: 37-74.

Storage: Can be stored at +4°C short term (1-2 weeks). For long term storage, aliquot and store at -20°C or -70°C.

Avoid repeated freezing and thawing cycles

For research use only. This product is not intended or approved for human, diagnostics or veterinary use.



Manufactured for:

Immuno-Biological Laboratories, Inc. (IBL-America)
8201 Central Ave. NE, Suite P, Minneapolis, Minnesota 55432, USA

Phone: (888) 523-1246 Fax.: (763) 780-2988

Email: info@ibl-america.com Web: www.ibl-america.com