

# Product information



## ABI3, 1-366aa

Human, His-tagged, Recombinant, *E.coli*

Cat. No. IBATGP1733

**Full name:** ABI family, member 3

**NCBI Accession No.:** NP\_057512

**Synonyms:** NESH, SSH3BP3

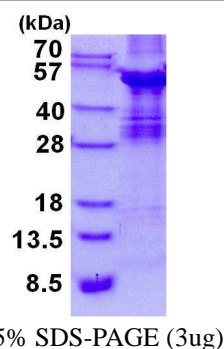
**Description:** ABI3, also as known as ABI gene family member 3, belongs to the ABI family. This protein is a member of an adaptor protein family. Members of this family encode proteins containing a homeobox homology domain, proline rich region and Src-homology 3 (SH3) domain. The Abi family members are thought to negatively regulate cell growth and transformation, including cellular transformation through v-Abl as well as mediate cell motility by regulating actin polymerization in lamellipodia and filopodia. ABI3 inhibits ectopic metastasis of tumor cells as well as cell migration. This may be accomplished through interaction with p21-activated kinase.

**Form:** Liquid. In 20mM Tris-HCl buffer (pH 8.0) containing 0.4M Urea, 10% glycerol

**Molecular Weight:** 41.4 kDa (389aa)

**Purity:** > 85% by SDS - PAGE

**Concentration:** 0.5 mg/ml (determined by Bradford assay)



### Sequences of amino acids:

MGSSHHHHH SSSLVPRGSH MGSMAELQQL QEFEIPTGRE ALRGNHSALL RVADYCEDNY VQATDKRKAL EETMAFTTQA LASVAYQVGN  
LAGHTLRMLD LQGAALRQVE ARVSTLGQMV NMHMEKVARR EIGTLATVQR LPPGQKVIAP ENLPPLTPYC RRPLNFGCLD DIGHGDKLS  
TQLSRTGTLS RKS IKAPATP ASATLGRPPR IPEPVHLPVV PDGRLSAASS ASSLASAGSA EGVGGAPTPK GQAAPPAPPL PSSLDPPPPP  
AAVEVFQRPP TLEELSPPPP DEELPLPLDL PPPPLDGDE LGLPPPPPGF GPDEPSWVPA SYLEKVVTLY PYTSQKDNEL SFSEGTVICV  
TRRYSYDQWCE GVSSEGTGFF PGNVVEPSC

### General references:

Ichigotani Y., *et al.* (2002) *Cancer Res.* 62:2215-2219

Miyazaki K., *et al.* (2000) *Biochim Biophys Acta* 1493 (1-2): 237-41.

**Storage:** Can be stored at +4°C short term (1-2 weeks). For long term storage, aliquot and store at -20°C or -70°C.  
Avoid repeated freezing and thawing cycles.

**For research use only. This product is not intended or approved for human, diagnostics or veterinary use.**



Manufactured for:

Immuno-Biological Laboratories, Inc. (IBL-America)  
8201 Central Ave. NE, Suite P, Minneapolis, Minnesota 55432, USA

Phone: (888) 523-1246 Fax.: (763) 780-2988

Email: [info@ibl-america.com](mailto:info@ibl-america.com) Web: [www.ibl-america.com](http://www.ibl-america.com)