

Product information



ADPRH, 1-357aa

Human, His-tagged, Recombinant, *E.coli*

Cat. No. IBATGP1633

Full name: [Protein ADP-ribosylarginine] hydrolase

NCBI Accession No.: NP_001116

Synonyms: ARH1

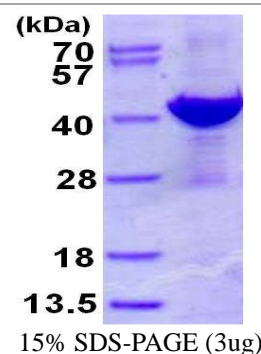
Description: ADPRH (ADP-ribosylarginine hydrolase), also known as ADP-ribose-L-arginine cleaving enzyme, belongs to the ADP-ribosylglycohydrolase family. This protein catalyzes removal of mono-ADP-ribose from arginine residues of proteins in the ADP-ribosylation cycle. Unlike the rat and mouse enzymes, which require DTT for maximal activity, the human enzyme is DTT-independent. Recombinant human ADPRH protein, fused to His-tag at N-terminus, was expressed in *E.coli* and purified by using conventional chromatography techniques.

Form: Liquid. In 20 mM Tris-HCl buffer, pH8.0, 10% glycerol, 1mM DTT, 100mM NaCl

Molecular Weight: 42.1kDa (381 aa), confirmed by MALDI-TOF

Purity: > 90% by SDS - PAGE

Concentration: 0.5mg/ml (determined by Bradford assay)



Sequences of amino acids:

MGSSHHHHH SSGLVPRGSH MGSHEKYVA AMVLSAAGDA LGYNGKWEF LQDGEK IHRQ LAQLGGLDAL DVGRWRVSDD TVMHLATAEA
LVEAGKAPKL TQLYLLAKH YQDCMEDMG RAPGGASVHN AMQLKPGKPN GWRI PFNSHE GGCGAAMRAM CIGLRFPHHS QLDTL IQVSI
ESGRMTHHP TGYL GALASA LFTAYAVNSR PPLQWQKGLM ELLPEAKKYI VQSGYFVEEN LQHWSYFQTK WENYLKLRGI LDGESAPTFP
ESFGVKERDQ FYTSLSYSGW GGSSGHDAPM IAYDAVLAAG DSWKELAHRA FFHGGSDST AA IAGCWGV MYGFKGVSPS NYEKLEYRNR
LEETARALYS LGSKEDTVIS L

General references:

Weber F, *et al.* (2005) *J Clin Endocrinol Metab.* 90(2):1149-55.

Kernstock S, *et al.* (2009) *Acta Crystallogr Sect F Struct Biol Cryst Commun.* 65(Pt 5):529-32.

Storage: Can be stored at +4°C short term (1-2 weeks). For long term storage, aliquot and store at -20°C or -70°C.
Avoid repeated freezing and thawing cycles.

For research use only. This product is not intended or approved for human, diagnostics or veterinary use.



Manufactured for:

Immuno-Biological Laboratories, Inc. (IBL-America)
8201 Central Ave. NE, Suite P, Minneapolis, Minnesota 55432, USA
Phone: (888) 523-1246 Fax.: (763) 780-2988
Email: info@ibl-america.com Web: www.ibl-america.com