

Product information



LDOC1L, 1-239aa

Human, His-tagged, Recombinant, *E.coli*

Cat. No. IBATGP1629

Full name: Protein LDOC1L

NCBI Accession No.: NP_115663

Synonyms: dJ1033E15.2, Mar6, Mart6

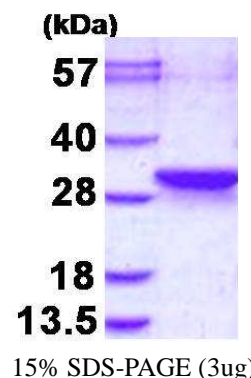
Description: Leucine zipper, down-regulated in cancer 1-like, also known as LDOC1L, belongs to the LDOC1 family. LDOC1 is a nuclear protein that contains a leucine zipper-like motif and a proline-rich region that shares marked similarity with an SH3-binding domain. The protein localizes to the nucleus and is downregulated in some cancer cell lines. LDOC1L is thought to regulate the transcriptional response mediated by the nuclear factor kB (NFkB). Recombinant human LDOC1L protein, fused to His-tag at N-terminus, was expressed in *E.coli* and purified by using conventional chromatography techniques.

Form: Liquid. In 20mM Tris-HCl buffer (pH 8.0) containing 0.1M NaCl, 40% glycerol, 2mM DTT, 0.1mM PMSF, 1mM EDTA

Molecular Weight: 28.7 kDa (263aa), confirmed by MALDI-TOF

Purity: > 90% by SDS - PAGE

Concentration: 0.5 mg/ml (determined by Bradford assay)



Sequences of amino acids:

MGSSHHHHHH SSGLVPRGSH MGS~~H~~MQPQT SKAESPALAA SPNAQMDDVI DTLTSLRLTN SALRREASTL RAEKANLTNM LESVMAELTL LRTRARIPGA LQITPPISSI TSN~~G~~TRPMTT PPTSLPEPFS GDPGRLAGFL MQMDRFMIFQ ASRFPGEAER VAF~~L~~VSRLTG EAEKWAIPHM QPDSPLRN~~N~~Y QGFLAELRRT YKSPLRHARR AQIRKTSASN RAVRERQMLC RQLASAGTGP CPVHPASNGT SPAPALPARA RNL

General references:

Nagasaki K., *et al.* (1999) *Cancer Lett.* 140: 227-234

Nagasaki K., *et al.* (2003) *J Cancer.* 105: 454-458.

Storage: Can be stored at +4°C short term (1-2 weeks). For long term storage, aliquot and store at -20°C or -70°C. Avoid repeated freezing and thawing cycles.

For research use only. This product is not intended or approved for human, diagnostics or veterinary use.



Manufactured for:
Immuno-Biological Laboratories, Inc. (IBL-America)
8201 Central Ave. NE, Suite P, Minneapolis, Minnesota 55432, USA
Phone: (888) 523-1246 Fax.: (763) 780-2988
Email: info@ibl-america.com Web: www.ibl-america.com