

Product information



CHMP1B 1-199aa

Human, His-tagged, Recombinant, *E.coli*

Cat. No. IBATGP1571

Full name: Charged multivesicular body protein 1b

NCBI Accession No.: NP_065145

Synonyms: C10orf2, C18-ORF2, C18orf2, CHMP1.5, hVps46-2, Vps46-2, Vps46B

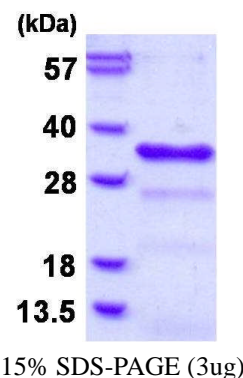
Description: CHMP1B, also known as charged multivesicular body protein 1b, is probable peripherally associated component of the endosomal sorting required for transport complex III (ESCRT-III) which is involved in multivesicular bodies (MVBs) formation and sorting of endosomal cargo proteins into MVBs. MVBs contain intraluminal vesicles (ILVs) that are generated by invagination and scission from the limiting membrane of the endosome and mostly are delivered to lysosomes enabling degradation of membrane proteins, such as stimulated growth factor receptors, lysosomal enzymes and lipids. Recombinant human CHMP1B protein, fused to His-tag at N-terminus, was expressed in *E.coli* and purified by using conventional chromatography.

Form: Liquid. 20mM Tris-HCl buffer (pH8.0) containing 20% glycerol,
0.1M NaCl, 1mM DTT

Molecular Weight: 24.7 kDa (223aa), confirmed by MALDI-TOF
(Molecular weight on SDS-PAGE will appear higher)

Purity: > 85% by SDS - PAGE

Concentration: 0.25mg/ml (determined by Bradford assay)



Sequences of amino acids:

MGSSHHHHHH SSSLVPRGSH MGSMSNMEK HLFNLKFAAK ELSRSAKKCD KEEKAEKAKI KKAIQKGNME VAR|HAENA| RQKNQAVNFL
RMSARVDAVA ARVQTAVTMG KVTKSMAGVV KSMDATLKTML NLEK|SALMD KFEHQFETLD VQTQQMEDTM SSTTTLTPPQ NQVDMLLQEM
ADEAGLDLNM ELPQQGTGSV GTSVASAEQD ELSQRLARLR DQV

General references:

Martin-Serrano J., *et al.* (2003) *Proc. Natl. Acad. Sci. U.S.A.* 100:12414-12419

Bajorek M., *et al.* (2009) *Mol. Biol. Cell.* 20:1360-1373

Storage: Can be stored at +4°C short term (1-2 weeks). For long term storage, aliquot and store at -20°C or -70°C.
Avoid repeated freezing and thawing cycles.

For research use only. This product is not intended or approved for human, diagnostics or veterinary use.



Immuno-Biological Laboratories, Inc. (IBL-America)
8201 Central Ave. NE, Suite P, Minneapolis, Minnesota 55432, USA
Phone: (888) 523-1246 Fax.: (763) 780-2988
Email: info@ibl-america.com Web: www.ibl-america.com