

Product Information

Recombinant human CRIPT protein

Catalog Number: IBATGP1545



PRODUCT INFORMATION

Expression system

E.coli

Domain

1-101aa

UniProt No.

Q9P021

NCBI Accession No.

NP_054890

Alternative Names

Cysteine-rich PDZ-binding protein, HSPC139

PRODUCT SPECIFICATION

Molecular Weight

13.7 kDa (124aa) confirmed by MALDI-TOF

Concentration

1mg/ml (determined by Bradford assay)

Formulation

Liquid in. 20mM Tris-HCl buffer (pH 8.0) containing 20% glycerol, 0.1M NaCl, 1mM DTT

Purity

> 95% by SDS-PAGE

Tag

His-Tag

Application

SDS-PAGE

Storage Condition

Can be stored at +2C to +8C for 1 week. For long term storage, aliquot and store at -20C to -80C. Avoid repeated freezing and thawing cycles.

BACKGROUND

Description

CRIPT, also known as cysteine-rich PDZ-binding protein, is involved in the cytoskeletal anchoring of DLG4 in excitatory synapses. Recombinant human CRIPT protein, fused to His-tag at N-terminus, was expressed in E. coli and purified by using conventional chromatography.

Amino acid Sequence

<MGSSHHHHHH SGLVPRGSH MGS>MVCEKCE KKLGTVITPD TWKDGARNTT ESGGRKLNEN KALTSKKARF
DPYGGKNKFST CRICKSSVHQ PGSHYCQGCA YKKGICAMCG KKVLDTKNYK QTSV

For research use only. This product is not intended or approved for human, diagnostics or veterinary use.



Manufactured for:

Immuno-Biological Laboratories, Inc. (IBL-America)

8201 Central Ave. NE, Suite P, Minneapolis, Minnesota 55432, USA

Phone: (888) 523-1246

Fax: (763) 780-2988

Email: info@ibl-america.com

Web: www.ibl-america.com

1

Product Information

Recombinant human CRIPT protein

Catalog Number: IBATGP1545



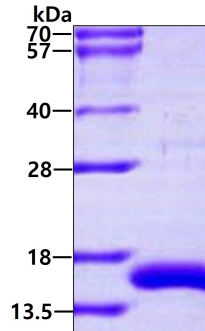
General References

Saro D., et al. (2007) *Biochemistry*. 46:6340-6352

Zhang Q.-H., et al. (2000) *Genome Res.* 10:1546-1560

DATA

SDS-PAGE



3 μ g by SDS-PAGE under reducing condition and visualized by coomassie blue stain.

For research use only. This product is not intended or approved for human, diagnostics or veterinary use.



Manufactured for:

Immuno-Biological Laboratories, Inc. (IBL-America)

8201 Central Ave. NE, Suite P, Minneapolis, Minnesota 55432, USA

Phone: (888) 523-1246

Fax: (763) 780-2988

Email: info@ibl-america.com

Web: www.ibl-america.com