

Product information



OTC, 33-354aa

Human, His-tagged, Recombinant, *E.coli*

Cat. No. IBATGP1473

Full name: ornithine carbamoyltransferase

NCBI Accession No.: NP_000522

Synonyms: OCTD, OTCase

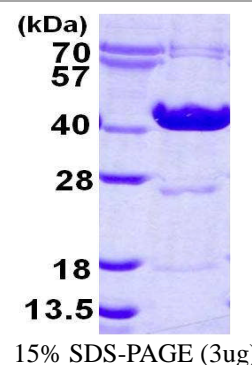
Description: OTC, also called ornithine carbamoyltransferase, belongs to the ATCase/OTCase family. OTC plays a vital role in the urea cycle, catalyzing the second step in this pathway: the formation of L-citrulline from L-ornithine and carbamoyl phosphate. In humans, the urea cycle is an important pathway to detoxification of ammonia. Mutations in the gene encoding OTC are associated with the X-linked disorder OTCD (ornithine carbamoyltransferase deficiency). OTCD is a disorder of the urea cycle characterized by hyperammonemia. Recombinant human OTC protein, fused to His-tag at N-terminus, was expressed in *E.coli* and purified by using conventional chromatography techniques.

Form: Liquid. In 20mM MES buffer (pH 6.0) containing 2mM DTT,
10% glycerol, 100mM NaCl

Molecular Weight: 38.9kDa (347aa), confirmed by MALDI-TOF

Purity: > 90% by SDS - PAGE

Concentration: 0.5mg/ml (determined by Bradford assay)



Sequences of amino acids:

MGSSHHHHHH SSGLVPRGSH MGS~~H~~MNKVQL KGRDLLTLKN FTGEEIKYML WLSADLKFRI KQKGEYLPLL QGKSLGMIFE KRSTRTRLST
ETGFALLGGH PCFLTQDIH LGVNESLTDI ARVLSSMADA VLARVYKQSD LDTLAKEASI PIINGLSLDLY HPIQILADYL TLQEHYSSLK
GLTLSWIGDG NNILHSIMMS AAKFGMHLQA ATPKGYEPDA SVTKLAEQYA KENGTKLLLT NDPLEAAHGG NVLITDTWIS MGQEEEEKKR
LQAFQGYQVT MKTAKVAASD WFLHCLPRK PEEVDDEVFY SPRSLVFPEA ENRKTIMAV MVSLLDYSP QLQKPKF

General references:

Trivedi, M., *et al.* (2001) *J. Clin. Gastroenterol.* 32: 340-343.

Yamaguchi, S., *et al.* (2006) *Hum. Mutat.* 27: 626-632.

Storage: Can be stored at +4°C short term (1-2 weeks). For long term storage, aliquot and store at -20°C or -70°C.
Avoid repeated freezing and thawing cycles.

For research use only. This product is not intended or approved for human, diagnostics or veterinary use.



Immuno-Biological Laboratories, Inc. (IBL-America)
8201 Central Ave. NE, Suite P, Minneapolis, Minnesota 55432, USA
Phone: (888) 523-1246 Fax.: (763) 780-2988
Email: info@ibl-america.com Web: www.ibl-america.com