

Product information

ALDOB, 1-364aa

Human, His-tagged, Recombinant, *E.coli*

Cat. No. IBATGP1404

Full name: Fructose-bisphosphate aldolase B

NCBI Accession No.: NP_000026

Synonyms: ALDB, ALDO2

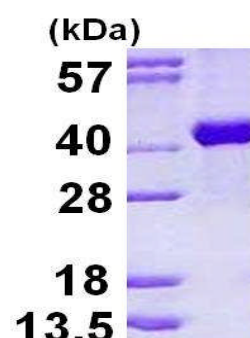
Description: Fructose-bisphosphate aldolase B, also known as ALDOB, is one of three known aldolase isoenzymes, and is found in kidney and small adult intestine where it is associated with aldolases A or C. ALDOB catalyzes the reversible cleavage of fructose 1-phosphate into dihydroxyacetone phosphate and glyceraldehyde. It is regulated by the hormones Insulin and glucagon and has been implicated in hereditary fructose intolerance disease. Recombinant human ALDOB protein, fused to His-tag at N-terminus, was expressed in *E.coli* and purified by using conventional chromatography techniques.

Form: Liquid. In 20mM Tris-HCl buffer (pH 8.0) containing 1mM DTT, 10% glycerol, 0.1M NaCl

Molecular Weight: 42 kDa (388aa) confirmed by MALDI-TOF

Purity: > 95% by SDS - PAGE

Concentration: 1 mg/ml (determined by Bradford assay)



15% SDS-PAGE (3ug)

Sequences of amino acids:

MGSSHHHHH SSGLVPRGSH MGSHMAHRFP ALTQEQKKEL SEIAQSIVAN GKGILAADES VGTMGNRLQR IKVENTEENR RQFREILFSV
DSSINQSIGG VILFHETLYQ KDSQGKLFNR ILKEKGIVVG IKLDQGGAPL AGTNKETTIQ GLDGLSERCA QYKKGVDVFG KWRVAVLRIAD
QCPSSLAIQE NANALARYAS ICQQNGLVPI VEPEVIPDGD HDLEHCQYVT EKVLAAYYKA LNDHHVYLEG TLLKPNMVTA GHACTKKYTP
EQVAMATVTA LHRTVPAAVP GICFLSGGMS EEDATLNLNA INLCPLPKPW KLSFSYGRAL QASALAAWGG KANKEATQE AFMKRAMANC
QAAKGQYVHT GSSGAASTQS LFTACYTY

General references:

Caffe A R., *et al.* (1994) *J Comp Neurol.* 348:291-297.

Dehnes Y., *et al.* (1998) *J Neurosci.* 18:3606-3619.

Storage: Can be stored at +4°C short term (1-2 weeks). For long term storage, aliquot and store at -20°C or -70°C.
Avoid repeated freezing and thawing cycles.

For research use only. This product is not intended or approved for human, diagnostics or veterinary use.



Immuno-Biological Laboratories, Inc. (IBL-America)
8201 Central Ave. NE, Suite P, Minneapolis, Minnesota 55432, USA
Phone: (888) 523-1246 Fax: (763) 780-2988
Email: info@ibl-america.com Web: www.ibl-america.com