

# Product information

## TUBG1, 1-451 aa

Human, His-tagged, Recombinant, *E.coli*

Cat. No. IBATGP1295

**Full name:** Tubulin gamma-1 chain.

**NCBI Accession No.:** NP\_001061

**Synonyms:** GCP-1, TUBG, TUBGCP1.

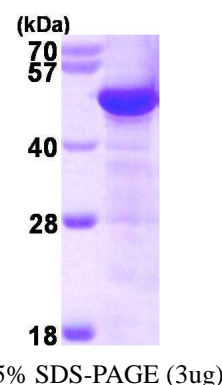
**Description:** TUBG1 is a member of the tubulin superfamily. This protein localizes to the centrosome where it binds to microtubules as part of a complex referred to as the gamma-tubulin ring complex. It mediates microtubule nucleation and is required for microtubule formation and progression of the cell cycle. Recombinant human TUBG1 protein, fused to His-tag at N-terminus, was expressed in *E.coli*.

**Form:** Liquid. In 20mM Tris-HCl buffer(pH 8.0) 1M Urea, 5% Glycerol.

**Molecular Weight:** 53.3 kDa (471aa)

**Purity:** > 85 % by SDS - PAGE

**Concentration:** 1 mg/ml (determined by Bradford assay)



### Sequences of amino acids:

MGSSHHHHHH SSSLVPRGSH MPREIITLQL GQCGNQIGFE FWKQLCAEHG ISPEGIVEEF ATEGTRKDV FFYQADDEHY IPRAVLLDLE  
 PRVIHSILNS PYAKLYNPEN IYLSEHGGA GNNWASGFSQ GEKI HEDIFD IIDREADGSD SLEGFVLCHS IAGGTGSLG SYLLERLNDR  
 YPKKLVQTYV VFPNQDEMSD VVVQPYNSLL TLKRLTQNAD CVVLDNTAL NRIATDRLHI QNPSFSQINQ LVSTIMSAST TTLRYPGYMN  
 NDLI GLIASL IPTPRLHFLM TGYTPLTTDQ SVASVRKTTV LDVMRRLQP KNVMVSTGRD RQTNHCYIAI LNI IQGEVDP TQVHKSLQRI  
 RERKLANFIP WGPASIQVAL SRKSPYLPVA HRVSGLMAN HTSISLFR TCRQYDKLRK REAFLEQFRK EDMFKDNFDE MDTREIVQQ  
 LIDEYHAATR PDYISWGTQE Q

### General references:

Zheng Y., *et al.* (1991) *Cell*. 65(5):817-23.

Wise DO., *et al.* (2000) *Genomics*. 67(2):164-70.

**Storage:** Can be stored at +4°C short term (1-2 weeks). For long term storage, aliquot and store at -20°C or -70°C.  
 Avoid repeated freezing and thawing cycles.

**For research use only. This product is not intended or approved for human, diagnostics or veterinary use.**