

Product information



ASL, 1-464aa

Human, His-tagged, Recombinant, *E.coli*

Cat. No. IBATGP1271

Full name: Argininosuccinate lyase

NCBI Accession No.: NP_000039

Synonyms: ASAL

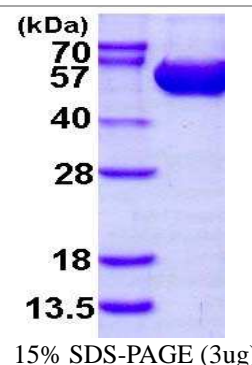
Description: ASL (argininosuccinate lyase) belongs to the lyase 1 family. ASL is an enzyme that catalyzes the reversible breakdown of argininosuccinate (ASA) producing the amino acids arginine and fumarate. Located in liver cytosol, ASL is the fourth enzyme of the urea cycle and involved in the biosynthesis of arginine in all species and the production of urea in ureotelic species. While ASS (argininosuccinate synthetase) catalyzes the formation of argininosuccinate from citrulline and aspartate, ASL breaks the newly formed argininosuccinate into L-arginine and fumarate. L-arginine continues through the urea cycle to form urea and ornithine, while fumarate can enter the citric acid cycle. Recombinant human ASL protein, fused to His-tag at N-terminus, was expressed in *E.coli* and purified by using conventional chromatography techniques.

Form: Liquid. In 20mM Tris-HCl buffer (pH 8.0) containing 2mM DTT,
10% glycerol, 100mM NaCl

Molecular Weight: 53.8kDa (484aa)

Purity: > 95% by SDS - PAGE

Concentration: 0.5mg/ml (determined by Bradford assay)



Sequences of amino acids:

MGSSHHHHH SSGLVPRGSH MASESGKLWG GRFVGAVDPI MEKFNASIAY DRHLWEVDVQ GSKAYSRGLE KAGLLTKAEM DQILHGLDKV
AEEWAQGTFFK LNSNDEDIHT ANERRLKELI GATAGKLHTG RSRNDQVVT D LRLWMRQTCS TLSGLLWELI RTMVDRAEAE RDVLFPGYTH
LQRAQPIRWS HWILSHAVAL TRDSERLLEV RKRINVLP LG SGAIAGNPLG VDRELLRAEL NFGAITLNSM DATSERDFVA EFLFWASLCM
THLSRMAEDL ILYCTKEFSF VQLSDAYSTG SSLMPQKKNP DSLELIRSKA GRVFGRCAGL LMTLKGLPST YNKDLQEDKE AVFEVSDTMS
AVLQVATGVI STLQIHQENM GQALSPDMLA TDLAYYLVRK GMPFRQAHEA SGKAVFMAET KGVALNQLSL QELQTSPLF SGDVI CVWDY
GHSVEQYGAL GGTARSSVDW QIRQVRALLQ AQQA

General references:

Barbosa P., *et al.* (2008). *J Biol Chem.* 266(8):5286-90

Zhao S., *et al* (2010) *Science* 327:1000-1004

Storage: Can be stored at +4°C short term (1-2 weeks). For long term storage, aliquot and store at -20°C or -70°C.
Avoid repeated freezing and thawing cycles.

For research use only. This product is not intended or approved for human, diagnostics or veterinary use.



Manufactured for:

Immuno-Biological Laboratories, Inc. (IBL-America)
8201 Central Ave. NE, Suite P, Minneapolis, Minnesota 55432, USA

Phone: (888) 523-1246

Fax.: (763) 780-2988

Email: info@ibl-america.com

Web: www.ibl-america.com