

# Product information

## ARL15, 1-204aa

Human, His-tagged, Recombinant, *E.coli*

Cat. No. IBATGP1257

**Full name:** ADP-ribosylation factor-like protein 15

**NCBI Accession No.:** NP\_061960

**Synonyms:** ARFRP2

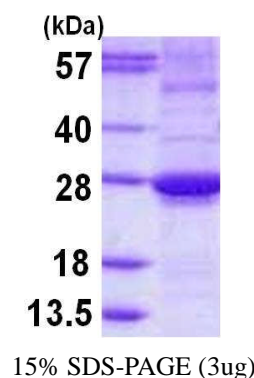
**Description:** ARL15, also known as ARFRP2, belongs to the ARF family. ARFs are important in eukaryotic vesicular trafficking pathways and play an essential role in the activation of phospholipase D. ARL15 variants influence levels of Acrp30, an adipocyte-derived protein that is particularly heritable and inversely associated with risk of type 2 diabetes mellitus and coronary heart disease. Recombinant human ARL15 protein, fused to His-tag at N-terminus, was expressed in *E.coli* and purified by using conventional chromatography techniques.

**Form:** Liquid. In 20mM Tris-HCl buffer (pH 8.0) containing 1mM DTT, 10% glycerol, 0.1M NaCl

**Molecular Weight:** 25 kDa (224aa), confirmed by MALDI-TOF

**Purity:** > 85% by SDS - PAGE

**Concentration:** 1 mg/ml (determined by Bradford assay)



### Sequences of amino acids:

MGSSHHHHH SSGLVPRGSH MSDLRITEAF LYMDYLCFRA LCCKGPPPAR PEYDLVCIGL TGSGKTSLLS KLCSESPDNV VSTTGFSIKA  
VPFQNAIILNV KELGGADNIR KYWSRYQQS QGVIFVLDSA SSEDDLEAAR NELHSALQHP QLCTLPFLIL ANHQDKPAAR SVQEIKKYFE  
LEPLARGKRW ILQPCSLDDM DALKDSFSQL INLLEEKDHE AVR M

### General references:

Richards J B., *et al.* (2009) *PLoS Genet.* 5:e1000768.

Gillingham A K., *et al.* (2007) *Annu Rev Cell Dev Biol.* 23:579-611.

**Storage:** Can be stored at +4°C short term (1-2 weeks). For long term storage, aliquot and store at -20°C or -70°C. Avoid repeated freezing and thawing cycles.

For research use only. This product is not intended or approved for human, diagnostics or veterinary use.