

Product information

AP1S2, 1-157 aa

Human, His-tagged, Recombinant, *E.coli*

Cat. No. IBATGP1086

Full name: AP-1 complex subunit sigma-2

NCBI Accession No.: NP_003907

Synonyms: DC22, MGC:1902, MRX59, SIGMA1B

Description: AP1S2, also known as AP-1 complex subunit sigma-2, serves as the small subunit of AP-1 complex 1 and is a member of the adaptin protein family. Adaptor protein complex 1 is found at the cytoplasmic face of coated vesicles located at the Golgi complex, where it mediates both the recruitment of clathrin to the membrane and the recognition of sorting signals within the cytosolic tails of transmembrane receptors. Recombinant human AP1S2 protein, fused to His-tag at N-terminus, was expressed in *E.coli* and purified by using conventional chromatography.

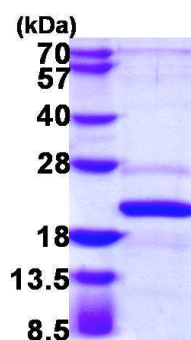
Form: Liquid. 20mM Tris-HCl buffer (pH8.0) containing 40% glycerol

0.1M NaCl, 2mM DTT

Molecular Weight: 20.7 kDa (177aa), confirmed by MALDI-TOF

Purity: > 85% by SDS - PAGE

Concentration: 0.5 mg/ml (determined by Bradford assay)



15% SDS-PAGE (3ug)

Sequences of amino acids:

MGSSHHHHHH SSGLVPRGSH MQFMLLFSRQ GKLRLQKWYV PLSDKEKKKI TRELVQTVLA RPKMKCSFLE WRDLKIVYKR YASLYFCCA
EDQDNELITL EIIHRYVELL DKYFGSVCEL DIIFNFEKAY FILDEFLLGG EVQETSCKNV LKAIEQADLL QEEAETPRSV LEEIGLT

General references:

Tarpey PS. *et al.* (2006) *Am J Hum Genet.* 79:1119–24.

Takatsu H. *et al.* (1998) *J Biol Chem.* 273 :24693–700

Storage: Can be stored at +4°C short term (1-2 weeks). For long term storage, aliquot and store at -20°C or -70°C.
Avoid repeated freezing and thawing cycles.

For research use only. This product is not intended or approved for human, diagnostics or veterinary use.



Immuno-Biological Laboratories, Inc. (IBL-America)
8201 Central Ave. NE, Suite P, Minneapolis, Minnesota 55432, USA
Phone: +1 (763) - 780-2955 Fax: +1 (763) - 780-2988
Email: info@ibl-america.com Web: www.ibl-america.com