

Product information

glsA1, 1-310aa

E.coli, His-tagged, Recombinant, *E.coli*

Cat. No. IBATGP1053

Full name: Glutaminase1

NCBI Accession No.: NP_415018

Synonyms: ybaS,

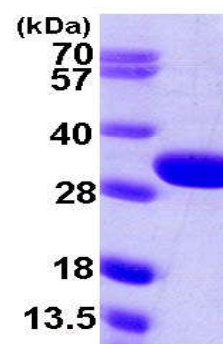
Description: GlsA1 (glutaminase1) belongs to the large superfamily of serine-dependent beta-lactamases and penicillin-binding proteins. They are present in most bacteria and eukaryotes and catalyze the hydrolytic deamidation of L-glutamine to L-glutamate and free NH₄⁺. Recombinant *E.coli* glsA1 protein, fused to His-tag at N-terminus, was expressed in *E.coli* and purified by using conventional chromatography techniques.

Form: Liquid. In 20mM Tris-HCl buffer (pH 8.0) containing 1mM DTT, 10% glycerol, 100mM NaCl

Molecular Weight: 35.0 kDa (330aa), confirmed by MALDI-TOF

Purity: > 95% by SDS - PAGE

Concentration: 1mg/ml (determined by Bradford assay)



15% SDS-PAGE (3ug)

Sequences of amino acids:

MGSSHHHHHH SSGLVPRGSH MLDANKLQQA VDQAYTQFHS LNGGQNADYI PFLANVPGQL AAVAIVTCDG NVYSAGDSY RFALESISKV
 CTLALALEDV GPQAVQDKIG ADPTGLPFNS VIALELHGGK PLSPLVNAGA IATTSLINAE NVEQRWQRIL HIQQQLAGEQ VALSDEVNQS
 EQTTNFHNRA IAWLLYSAGY LYCDAMEACD VYTRQCSTLL NTIELATLGA TLAAGGVNPL THKRVLQADN VPYILAEMMM EGLYGRSGDW
 AYRVGLPGKS GVGGGILAVV PGVMGIAAFS PPLDEDGNSV RGQKMVASVA KQLGYNVFKG

General references:

Brown G., *et al.* (2008) *Biochemistry*. 47(21):5724-35.

Nandakumar R., *et al.* (2003) *J. Mol. Catal. B: Enzymes*. 23:87-100.

Storage: Can be stored at +4°C short term (1-2 weeks). For long term storage, aliquot and store at -20°C or -70°C.
 Avoid repeated freezing and thawing cycles.

For research use only. This product is not intended or approved for human, diagnostics or veterinary use.