

# Product information

## ETFb, 1-255aa

Human, His-tagged, Recombinant, *E.coli*

Cat. No. IBATGP1047

**Full name:** Electron transfer flavoprotein subunit beta

**NCBI Accession No.:** NP\_001976

**Synonyms:** FP585, MADD

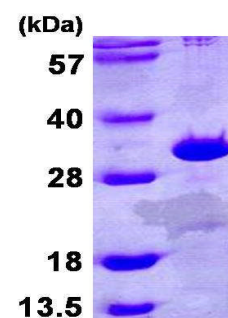
**Description:** ETF (electron transfer flavoprotein) is a heterodimer of an alpha and beta subunit. The ETFb protein is electron-transfer-flavoprotein, beta polypeptide, which shuttles electrons between primary flavoprotein dehydrogenases involved in mitochondrial fatty acid and amino acid catabolism and the membrane-bound electron transfer flavoprotein ubiquinone oxidoreductase. Recombinant human ETFb protein, fused to His-tag at N-terminus, was expressed in *E.coli* and purified by using conventional chromatography.

**Form:** Liquid. 20mM Tris-HCl buffer (pH8.0) containing 40% glycerol,  
0.1M NaCl

**Molecular Weight:** 30.0 kDa (275aa) confirmed by MALDI-TOF

**Purity:** > 90% by SDS - PAGE

**Concentration:** 0.25 mg/ml (determined by Bradford assay)



15% SDS-PAGE (3ug)

### Sequences of amino acids:

MGSSHHHHH SSGLVPRGSH MAELRVLVAV KRVIDYAVKI RVKPDRTGVV TDGVKHSMNPFCEIAVEEAV RLKEKLVKE VIAVSCGPAQ  
CQETIRTLA MGADRGIHVE VPPAEAERLG PLQVARVLAK LAEKEKVDLV LLGKQAIDDD CNQTGQMTAG FLDWPQGTFA SQVTLEGDKL  
KVEREIDGGL ETLRLKLPV VTADLRLNEP RYATLPNIMK AKKKKIEVIK PGDLGDLTS KLSVISVEDP PQRTAGVKVE TTEDLVAKLK  
EIGRI

### General references:

Colombo I., *et al.* (1994) *Hum. Mol. Genet.* 3:429-435

Bross P., *et al.* (1999) *Mol. Genet. Metab.* 67:138-147

**Storage:** Can be stored at +4°C short term (1-2 weeks). For long term storage, aliquot and store at -20°C or -70°C.  
Avoid repeated freezing and thawing cycles.

**For research use only. This product is not intended or approved for human, diagnostics or veterinary use.**