

Product information

CCL4L1, 24-92 aa

Human, His-tagged, Recombinant, *E.coli*

Cat. No. IBATGP1042

Full name: C-C motif chemokine 4-like

NCBI Accession No.: NP_001001435

Synonyms: AT744.2, CCL4L, CCL4L2, LAG-1, LAG1, SCYA4L

Description: CCL4L1 (C-C motif chemokine 4-like) belongs to intercrine beta (chemokine CC) family. This protein is similar to CCL4 which inhibits HIV replication in peripheral blood monocytes that express CCR5. Recombinant human CCL4L1 protein, fused to His-tag at N-terminus, was expressed in *E.coli* and purified by conventional chromatography, after refolding of the isolated inclusion bodies in a renaturation buffer.

Form: Liquid. In 10mM sodium citrate (pH 3.5), 10% glycerol

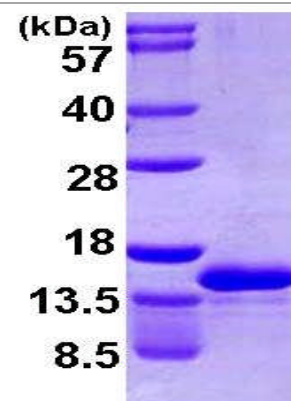
Molecular Weight: 10.5kDa (94aa) confirmed by MALDI-TOF

(Molecular weight on SDS-PAGE will appear higher)

Purity: > 90% by SDS - PAGE

Concentration: 0.5mg/ml (determined by Bradford assay)

Endotoxin Level: < 1.0 EU per 1 µg of protein (determined by LAL method)



15% SDS-PAGE (3µg)

Sequences of amino acids:

MGSSHHHHHH SSGLVPRGSH MGSHPMAPMGS DPPTACCFYSY TARKLPRNFV VDYETSSLC SQPAVVFQTK RGKQVCADPS ESWQVEVYVD
LELN

General references:

Howard O.M.Z., *et al.* (2004) *Biochem. Biophys. Res. Commun.* 320:927-931

Colobran R, *et al.* (2005) *J Immunol.* 174(9):5655-64.

Storage: Can be stored at +4°C short term (1-2 weeks). For long term storage, aliquot and store at -20°C or -70°C.
Avoid repeated freezing and thawing cycles.

For research use only. This product is not intended or approved for human, diagnostics or veterinary use.