

Product information

RCN2, 26-317aa

Human, His-tagged, Recombinant, *E.coli*

Cat. No. IBATGP0996

Full name: Reticulocalbin-2

NCBI Accession No.: NP_002893

Synonyms: E6BP, ERC55

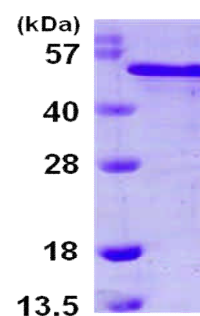
Description: RCN2, also known as reticulocalbin-2, is belongs to the CREC protein family. RCN2 is a calcium-binding protein located in the lumen of the ER. This protein contains six conserved regions with similarity to a high affinity Ca(+2)-binding motif, the EF-hand. Recombinant human RCN2 protein, fused to His-tag at N-terminus, was expressed in *E.coli* and purified by using conventional chromatography.

Form: Liquid. 20mM Tris-HCl buffer (pH8.0) containing 10% glycerol,
1mM DTT

Molecular Weight: 36.8 kDa (313aa) confirmed by MALDI-TOF
(Molecular weight on SDS-PAGE will appear higher)

Purity: > 90% by SDS - PAGE

Concentration: 1 mg/ml (determined by Bradford assay)



15% SDS-PAGE (3ug)

Sequences of amino acids:

MGSSHHHHH SSGLVPRGSH MEELHYPLGE RRSOYDREAL LGVQEDVDEY VKLGHEEQK RLQAI IKKID LDSGFLTES ELSSWIQMSF
KHYAMQEAQ QFVEYDKNSD DVTWDEYN I QMYDRVIDFD ENTALDAAE ESRKLHLKD KKRFEKANQD SGPGLSLEEF IAFEHPPEVD
YMTEFVIQEA LEEHDKNGDG FVSLEEF LGD YRWDPTANED PEWILVEKDR FVNDYDKDND GRDPQELL P WVPNNQGIA QEEALHLIDE
MDLNGDKKLS EEEILENPDL FLTSEATDYG RQLHDDYFYH DEL

General references:

Ludvigsen M, *et al.* (2009) *Proteomics*. 9(23):5267-87

Wang JY, *et al.* (1997) *Cytogenet Cell Genet*. 79(1-2):60-1

Storage: Can be stored at +4°C short term (1-2 weeks). For long term storage, aliquot and store at -20°C or -70°C.
Avoid repeated freezing and thawing cycles.

For research use only. This product is not intended or approved for human, diagnostics or veterinary use.



Immuno-Biological Laboratories, Inc. (IBL-America)
8201 Central Ave. NE, Suite P, Minneapolis, Minnesota 55432, USA
Phone: +1 (763) - 780-2955 Fax: +1 (763) - 780-2988
Email: info@ibl-america.com Web: www.ibl-america.com