

Product information

A2LD1, 1-153aa

Human, His-tagged, Recombinant, *E.coli*

Cat. No. IBATGP0959

Full name: Gamma-glutamylaminecyclotransferase

NCBI Accession No.: NP_149101

Synonyms: GGACT

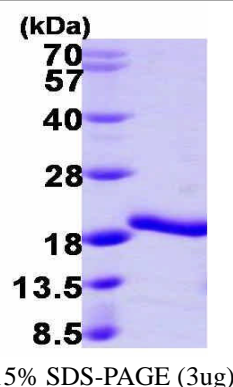
Description: A2LD1, also known as gamma-glutamylaminecyclotransferase, is an enzyme that converts gamma-glutamylamines to free amines and 5-oxoproline. It shows high activity toward gamma-glutamyl-epsilon-lysine, derived from the breakdown of fibrin and other proteins cross-linked by transglutaminases. This protein adopts the newly identified cyclotransferase fold, observed in gamma-glutamylcyclotransferase, an enzyme with activity toward gamma-glutamyl-alpha-amino acids. Recombinant human A2LD1 protein, fused to His-tag at N-terminus, was expressed in *E.coli* and purified by using conventional chromatography.

Form: Liquid. 20mM Tris-HCl buffer (pH8.0) containing 10% glycerol
0.1M NaCl

Molecular Weight: 19.4 kDa (173aa) confirmed by MALDI-TOF

Purity: > 95% by SDS - PAGE

Concentration: 1.0 mg/ml (determined by Bradford assay)



Sequences of amino acids:

MGSSHHHHHH SSGLVPRGSH MALVFVYGTL KRGQPNHRVL RDGAHGSAAF RARGRTLEPY PLVIAGEHNI PWillHLPGSG RLVEGEVYAV
DERMLRFLDD FESCPALYQR TVLRVQLLED RAPGAEPPA PTAVQCFVYS RATFPPEWAQ LPHHDSYDSE GPHGLRYNPR ENR

General references:

Oakley AJ., *et al.* (2010), *J Biol Chem.*, 285:9642-8.

Danson JW., *et al.* (2002), *Anal Biochem.*, 303:120-30.

Storage: Can be stored at +4°C short term (1-2 weeks). For long term storage, aliquot and store at -20°C or -70°C.

Avoid repeated freezing and thawing cycles.

For research use only. This product is not intended or approved for human, diagnostics or veterinary use.