

Product information



ATG5, 1-275 aa

Human, His-tagged, Recombinant, *E.coli*

Cat. No. IBATGP0903

Full name: Autophagy protein 5

NCBI Accession No.: NP_004840

Synonyms: APG5, APG5-LIKE, APG5L, ASP, hAPG5

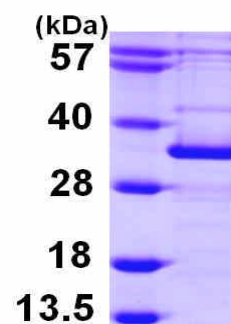
Description: Autophagy protein 5, also known as ATG5, belongs to the autophagy-related (ATG) genes family. Autophagy is a catabolic process for the autophagosomic-lysosomal degradation of bulk cytoplasmic contents. ATG5 protein is required for autophagy. It conjugates to ATG12 and associates with isolation membrane to form autophagosomes. ATG5 also plays an important role in the apoptotic process. Its expression is a relatively late event in the apoptotic process, occurring downstream of caspase activity. Recombinant human ATG5 protein, fused to His-tag at N-terminus, was expressed in *E.coli* and purified by using conventional chromatography techniques.

Form: Liquid. In 20mM Tris-HCl buffer (pH 8.0) containing 1mM DTT, 40% glycerol, 0.2M NaCl

Molecular Weight: 34.6 kDa (295aa), confirmed by MALDI-TOF

Purity: > 85% by SDS - PAGE

Concentration: 0.25 mg/ml (determined by Bradford assay)



15% SDS-PAGE (3ug)

Sequences of amino acids:

MGSSHHHHHH SSGLVPRGSH MTDDKDVLRD VWFGRIPTCF TLYQDEITER EAEPYLLLPVSYLTLVTD KVKKHFKQVM RQEDISEIWF
EYEGTPLKWH YPIGLLFDLL ASSSALPWNITVHFKSFPEK DLLHCPSKDA IEAHFMSCMK EADALKHKSQ VINEMQKKDH KQLWMGLQND
RFDQFWAINR KLMEYPAEEN GFRYIPFRIY QTTERPFIQ KLFRPVAADG QLHTLGDLLKEVCPSAIDPE DGEKKNQVMI HGIEPMLETP
LQWLSEHLSY PDNFLHISII PQPTD

General references:

Mizushima N., *et al.* (1998) *Nature*. 395:395-8.

WARNING: THIS PRODUCT IS NOT INTENDED OR APPROVED FOR HUMAN, DIAGNOSTICS OR VETERINARY USE. USE OF THIS PRODUCT FOR HUMAN OR ANIMAL TESTING IS EXTREMELY HAZARDOUS AND MAY RESULT IN DISEASE, SEVERE INJURY, OR DEATH.

Product information



Tanida I., *et al.* (1999) *Mol Biol Cell*. 10:1367-79.

Storage: Can be stored at +4°C short term (1-2 weeks). For long term storage, aliquot and store at -20°C or -70°C.
Avoid repeated freezing and thawing cycles.

WARNING: THIS PRODUCT IS NOT INTENDED OR APPROVED FOR HUMAN, DIAGNOSTICS OR VETERINARY USE. USE OF THIS PRODUCT FOR HUMAN OR ANIMAL TESTING IS EXTREMELY HAZARDOUS AND MAY RESULT IN DISEASE, SEVERE INJURY, OR DEATH.