

# Product information



## AIF1L, 1-150aa

Human, His-tagged, Recombinant, *E.coli*

Cat. No. IBATGP0879

**Full name:** Allograft inflammatory factor 1-like isoform 1

**NCBI Accession No.:** NP\_113614

**Synonyms:** C9orf58, FLJ12783, IBA2, MGC29466

**Description:** AIF1L, also known as allograft inflammatory factor 1-like, is a cytoplasmic, cytokine-induced, calcium-binding protein first discovered in rat cardiac allografts with chronic rejection. This protein is a marker of human microglia and is expressed by macrophages in injured skeletal muscle and regulates reduced proliferation and differentiation of satellite cells. Recombinant human AIF1L protein, fused to His-tag at N-terminus, was expressed in *E.coli* and purified by using conventional chromatography.

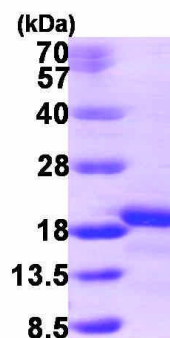
**Form:** Liquid. 20mM Tris-HCl buffer (pH8.0) containing 20% glycerol

0.1M NaCl, 1mM DTT

**Molecular Weight:** 19.2 kDa (170aa), confirmed by MALDI-TOF

**Purity:** > 95% by SDS - PAGE

**Concentration:** 1.0 mg/ml (determined by Bradford assay)



15% SDS-PAGE (3ug)

### Sequences of amino acids:

MGSSHHHHHH SSGLVPRGSH MSGELSNRFQ GGKAFGLLKA RQERRLAEIN REFLCDQKYS DEENLPEKLT AFKEKYMEDF LNNEGEIDLML  
SLKRMMEKLG VPKTHLEMKK MISEVTGGVS DTISYRDFVN MMLGKRSAVL KLVMVFEGKA NESSPKPVG PPERDIASLP

### General references:

Utans U, *et al.* (1995). *J. Clin. Invest.*, 95: 2954-2962

Deininger M.H., *et al.* (2000). *Acta Neuropathol.*, 100: 673-680

**Storage:** Can be stored at +4°C short term (1-2 weeks). For long term storage, aliquot and store at -20°C or -70°C.

**WARNING: THIS PRODUCT IS NOT INTENDED OR APPROVED FOR HUMAN, DIAGNOSTICS OR VETERINARY USE. USE OF THIS PRODUCT FOR HUMAN OR ANIMAL TESTING IS EXTREMELY HAZARDOUS AND MAY RESULT IN DISEASE, SEVERE INJURY, OR DEATH.**

# Product information

---



Avoid repeated freezing and thawing cycles.

**WARNING: THIS PRODUCT IS NOT INTENDED OR APPROVED FOR HUMAN, DIAGNOSTICS OR VETERINARY USE. USE OF THIS PRODUCT FOR HUMAN OR ANIMAL TESTING IS EXTREMELY HAZARDOUS AND MAY RESULT IN DISEASE, SEVERE INJURY, OR DEATH.**