

Product information



ISCU, 35-167aa

Human, His-tagged, Recombinant, *E.coli*

Cat. No. IBATGP0842

Full name: Iron-sulfur cluster assembly enzyme ISCU

NCBI Accession No.: NP_998760

Synonyms: HML, hnifU, ISU2, NIFU, NIFUN

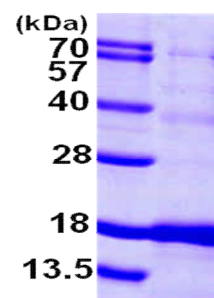
Description: Iron-sulfur cluster assembly enzyme, also known as ISCU, is a member of the nifU family. Iron-sulfur (Fe-S) clusters are necessary for several mitochondrial enzymes and other subcellular compartment proteins. It interact with ISCS, a cysteine desulfurase, to sequester inorganic sulfur for Fe-S cluster assembly. ISCU-ISCS protein complex localizes in both mitochondria and cytosol, implying that Fe-S cluster assembly takes place in multiple subcellular compartments in mammalian cells. Recombinant human ISCU protein, fused to His-tag at N-terminus, was expressed in *E.coli* and purified by using conventional chromatography techniques.

Form: Liquid. 20mM Tris-HCl buffer (pH8.0) containing 10% glycerol,
2mM DTT, 100mM NaCl

Molecular Weight: 16.7kDa (154aa), confirmed by MALDI-TOF

Purity: 90% by SDS - PAGE

Concentration: 0.5mg/ml (determined by Bradford assay)



15% SDS-PAGE (3ug)

Sequences of amino acids:

MGSSHHHHH SSGLVPRGSH MYHKVVDHY ENPRNVGSLD KTSKNVGTGL VGAPACGDVM KLQIQVDEKG KIVDARFKTF GCGSAIASSS
LATEWVGKGT VEEALTIKNT DIAKELCLPP VKLHCSMLAE DAIKAALADY KLKQEPKKGE AEKK

General references:

Tong WH., *et al.* (2000) *EMBO J.* 19:5692-5700

Tong WH, *et al.* (2006). *Cell Metab.* 3 (3): 199–210.

Storage: Can be stored at +4°C short term (1-2 weeks). For long term storage, aliquot and store at -20°C or -70°C.

WARNING: THIS PRODUCT IS NOT INTENDED OR APPROVED FOR HUMAN, DIAGNOSTICS OR VETERINARY USE. USE OF THIS PRODUCT FOR HUMAN OR ANIMAL TESTING IS EXTREMELY HAZARDOUS AND MAY RESULT IN DISEASE, SEVERE INJURY, OR DEATH.

Product information



Avoid repeated freezing and thawing cycles.

WARNING: THIS PRODUCT IS NOT INTENDED OR APPROVED FOR HUMAN, DIAGNOSTICS OR VETERINARY USE. USE OF THIS PRODUCT FOR HUMAN OR ANIMAL TESTING IS EXTREMELY HAZARDOUS AND MAY RESULT IN DISEASE, SEVERE INJURY, OR DEATH.