

# Product information



## MDP1, 1-176aa

Human, His-tagged, Recombinant, *E.coli*

Cat. No. IBATGP0823

**Full name:** Magnesium-dependent phosphatase 1

**NCBI Accession No.:** NP\_612485

**Synonyms:** MDP-1

**Description:** MDP1 (Magnesium-dependent phosphatase 1) belongs to the HAD-like hydrolase superfamily. This protein is a magnesium-dependent phosphatase which may act as a tyrosine phosphatase. It is inhibited by vanadate and zinc, and slightly by calcium. Recombinant human MDP1 protein, fused to His-tag at N-terminus, was expressed in *E.coli* and purified by using conventional chromatography techniques.

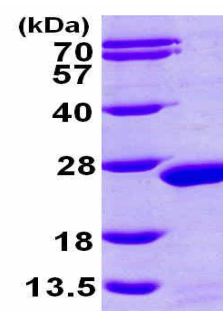
**Form:** Liquid. 20mM Tris-HCl buffer (pH8.0) containing 10% glycerol,

2mM DTT, 100mM NaCl

**Molecular Weight:** 22.7kDa (200aa), confirmed by MALDI-TOF

**Purity:** > 95% by SDS - PAGE

**Concentration:** 0.5mg/ml (determined by Bradford assay)



15% SDS-PAGE (3ug)

### Sequences of amino acids:

MGSSHHHHH SSGLVPRGSH MGSMMARLPK LAVFDLDYTL WPFWVDTHVD PPFHKSSDGT VRDRRGQDVR LYPEVPEVLK RLQSLGVPGA  
AASRTSEIEG ANQLLELFDL FRYFVHREIY PGSKITHFER LQKGTGIPFS QMIFFDERR NIVDVSKLGV TC1HIQNGMN LQTL SQGLET  
FAKAQTGPLR SSLEESPFEA

### General references:

Fortpied J., *et al.* (2006) *J Biol Chem.* 281(27):18378-85.

Selengut JD., *et al.* (2000) *Biochemistry* 39(28):8315-24.

**Storage:** Can be stored at +4°C short term (1-2 weeks). For long term storage, aliquot and store at -20°C or -70°C.

**WARNING: THIS PRODUCT IS NOT INTENDED OR APPROVED FOR HUMAN, DIAGNOSTICS OR VETERINARY USE. USE OF THIS PRODUCT FOR HUMAN OR ANIMAL TESTING IS EXTREMELY HAZARDOUS AND MAY RESULT IN DISEASE, SEVERE INJURY, OR DEATH.**

# Product information

---



Avoid repeated freezing and thawing cycles.

**WARNING: THIS PRODUCT IS NOT INTENDED OR APPROVED FOR HUMAN, DIAGNOSTICS OR VETERINARY USE. USE OF THIS PRODUCT FOR HUMAN OR ANIMAL TESTING IS EXTREMELY HAZARDOUS AND MAY RESULT IN DISEASE, SEVERE INJURY, OR DEATH.**