

Product information



CARHSP1, 1-147 aa

Human, His-tagged, Recombinant, *E.coli*

Cat. No. IBATGP0729

Full name: Calcium-regulated heat stable protein 1

NCBI Accession No.: NP_055131

Synonyms: CRHSP-24, CSDC1, MGC111446

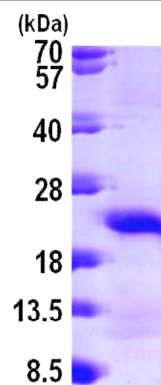
Description: CRAHSP1 is a serine phosphoprotein originally identified as a physiological substrate for the Ca²⁺-calmodulin regulated protein phosphatase calcineurin (PP2B). This protein interacts with the STYX/dead phosphate protein in developing spermatids and is a paralog of the brain-specific mRNA-binding protein PIPPIN. It is thought to play a common role in calcium-mediated signal transduction resulting from phosphorylation on serine residues. Recombinant human CRAHSP1 protein, fused to His-tag at N-terminus, was expressed in *E.coli* and purified by using conventional chromatography techniques

Form: Liquid. 20mM Tris-HCl buffer (pH8.0) containing 10% glycerol
0.1M NaCl

Molecular Weight: 18.0 kDa (167aa), confirmed by MALDI-TOF

Purity: > 90% by SDS - PAGE

Concentration: 0.5 mg/ml (determined by BCA)



15% SDS-PAGE (3ug)

Sequences of amino acids:

MGSSHHHHH SSGLVPRGSH MSSEPPPPPQ PPTHQASVGL LDTPRSRERS PSPLRGNVVP SPLPTRRTRT FSATVRASQG PVYKGVCKCF
CRSKGHGFIT PADGGPDIFL HISDVEGEYV PVEGDEVYK MCSIPPKNEK LQAVEVVITH LAPGTKHETW SGHVISS

General references:

Schäfer C., *et al.* (2003) *Am J Physiol Gastrointest Liver Physiol.* 285:G726-34

Groblewski G.E., *et al.* (1998) *J. Biol. Chem.* 273: 22738-22744.

WARNING: THIS PRODUCT IS NOT INTENDED OR APPROVED FOR HUMAN, DIAGNOSTICS OR VETERINARY USE. USE OF THIS PRODUCT FOR HUMAN OR ANIMAL TESTING IS EXTREMELY HAZARDOUS AND MAY RESULT IN DISEASE, SEVERE INJURY, OR DEATH.

Product information



Storage: Can be stored at +4°C short term (1-2 weeks). For long term storage, aliquot and store at -20°C or -70°C.
Avoid repeated freezing and thawing cycles.

WARNING: THIS PRODUCT IS NOT INTENDED OR APPROVED FOR HUMAN, DIAGNOSTICS OR VETERINARY USE. USE OF THIS PRODUCT FOR HUMAN OR ANIMAL TESTING IS EXTREMELY HAZARDOUS AND MAY RESULT IN DISEASE, SEVERE INJURY, OR DEATH.