

# Product information



## LGALS8, 1-317 aa

Human, His-tagged, Recombinant, *E.coli*

Cat. No. IBATGP0688

**Full Name:** Galectin-8

**NCBI Accession No.:** NP\_963837

**Synonyms:** Gal-8, PCTA1, Po66-CBP, Prostate carcinoma tumor antigen 1

**Description:** LGALS8, also known as prostate-specific membrane antigen (PCTA1), is an additional prostate-specific antigen that is overexpressed only in malignant tumors and therefore is a more specific identifier of malignancies. It is a member of the galectin gene family which mediates both cell-cell and cell matrix interactions in a manner similar to the selectin subgroup of C-type lectins. Recombinant human LGALS8 protein, fused to His-tag at N-terminus, was expressed in *E.coli* and purified by using conventional chromatography techniques.

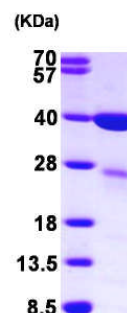
**Form:** Liquid. In 20 mM Tris-HCl buffer (pH8.0) containing 0.1M NaCl,  
1mM DTT, 10% glycerol

**Molecular Weight:** 37.9 kDa (337aa), , confirmed by MALDI-TOF

**Purity:** > 90% by SDS - PAGE

**Concentration:** 0.5 mg/ml (determined by Bradford assay)

**Biological activity:** The ED50 for this effect is 5 - 10 ug/ml. Measured by its ability to agglutinate human red blood cells.



15% SDS-PAGE (3ug)

### Sequences of amino acids:

MGSSHHHHH SSGLVPRGSH MMLSLNNLQN I IYNPVI PFV GTIPDQLDPG TLIVIRGHVP SDADRFQVDL QNGSSMKPRA DVAHFHNPRF  
KRAGCIVCNT LINEKWGREE I TYDTPFKRE KSFEIVIMVL KDKFQVAVNG KHTLLYGHR I GPEKIDTLGI YGKVNHSIG FSFSSDLQST  
QASSLELTEI SRENVPKSGT PQLRLPFAAR LNTPMGPGR T VVVKGEVNAK AKSFNVOLLA GKSKDIALHL NPRLNIKAFV RNSFLQESWG  
EEERNITSFP FSPGMYFEMI I YCDVREFKV AVNGVHSLEY KHRFKELSSI DTLEINGDIH LLEVRSW

### Biological Assay:

1. Mix equal volumes of human blood and Alsever's solution (pH 7.0).  
(Alsever's solution: NaCl 0.42 g, Sodium citric acid 0.8g, Citric acid 0.055 g, D-glucose 2.05g in DW100 ml)
2. Centrifuge at 15000rpm for 10 minutes and wash four times with PBS.
3. Dilute packed cells in a 0.5 mg/ml trypsin-EDTA solution to give 4% red cell suspension.

**For research use only. This product is not intended or approved for human, diagnostics or veterinary use.**



Manufactured for:

Immuno-Biological Laboratories, Inc. (IBL-America)  
8201 Central Ave. NE, Suite P, Minneapolis, Minnesota 55432, USA  
Phone: (888) 523-1246 Fax.: (763) 780-2988  
Email: [info@ibl-america.com](mailto:info@ibl-america.com) Web: [www.ibl-america.com](http://www.ibl-america.com)

# Product information

---

4. Incubate for 1h at 37°C and wash four times with PBS.
5. Dilute packed cells in PBS to give 4% red cell suspension.
6. Load 50µl of 0.5% BSA-in-0.15M-NaCl solution and 25µl of 4%-Red-Cell-in-PBS in u shaped wells.
7. Add 25µl of serial diluted galectin protein in PBS to each well plate. (Round bottom 96 well plate)
8. Incubate for 30min at room temperature to observe visible agglutination.

## General references:

Kobayashi T., *et al.* (2010) *Leukemia*. 24(4):843-50.

Streetly MJ., *et al.* (2010) *Blood*. 115(19):3939-48.

**Storage:** Can be stored at +4°C short term (1-2 weeks). For long term storage, aliquot and store at -20°C or -70°C.  
Avoid repeated freezing and thawing cycles.

---

**For research use only. This product is not intended or approved for human, diagnostics or veterinary use.**



Manufactured for:

Immuno-Biological Laboratories, Inc. (IBL-America)  
8201 Central Ave. NE, Suite P, Minneapolis, Minnesota 55432, USA

Phone: (888) 523-1246

Fax.: (763) 780-2988

Email: [info@ibl-america.com](mailto:info@ibl-america.com)

Web: [www.ibl-america.com](http://www.ibl-america.com)