

## surA, 21-428 aa

*E.coli*, His-tagged, Recombinant, *E.coli*

Cat. No. IBATGP0664

**Full name:** Chaperone surA

**NCBI Accession No.:** NP\_414595

**Synonyms:** PPlase surA, Rotamase surA, Survival protein A

**Description:** SurA is a periplasmic peptidyl-prolyl isomerase (PPlase) and chaperone of *Escherichia coli* and other Gram-negative bacteria. This protein is a major factor in the biogenesis of beta-barrel outer membrane proteins (OMPs) and plays an integral role in cell envelope homeostasis and cell envelope functions. It is essential for the survival of *E.coli* in stationary phase and required for pilus biogenesis. Recombinant *E.coli* SurA protein, fused to His-tag at N-terminus, was expressed in *E.coli* and purified by using conventional chromatography.

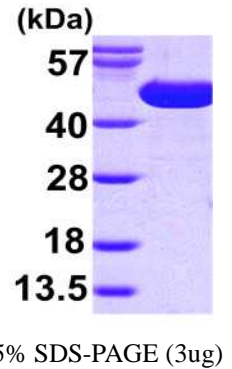
**Form:** Liquid. In 20 mM Tris-HCl Buffer (pH 8.0) containing 10% Glycerol

**Molecular Weight:** 47.3 kDa (429aa), confirmed by MALDI-TOF

**Purity:** > 95% by SDS - PAGE

**Concentration:** 1 mg/ml (determined by Bradford assay)

**Biological activity:** Specific activity is > 800 nmol/min/mg, and is defined as the amount of enzyme that cleaves 1nmole of suc-AAFP-PNA per minute at 37C in Tris-HCl pH 8.0 using chymotrypsin.



### Sequences of amino acids:

MGSSHHHHHH SSSLVPRGSH MAPQVVDKVA AVVNNGVVLE SDVDGLMQSV KLNAAQARQQ LPDDATLRHQ IMERLIMDQI ILQMGQKMGV  
KISDEQLDQA IANIAKQNNM TLDQMRSLA YDGLNYNTYR NQIRKEMIS EVRNNEVRRR ITILPQEVES LAQQVGNQND ASTELNLSHI  
LILPENPTS DQVNEAESA RAIVDQARNG ADFGKLAIAH SADQQALNGG QMGWGRIQEL PGIFAQALST AKKGDIVGPI RSGVGFHILK  
VNDLRGESKN ISVTEVHARH ILLKPSPIMT DEQARVKLEQ IAADIKSGKT TFAAAKEFS QDPGSANQGG DLGWATPDIF DPAFRDALTR  
LNKGQMSAPV HSSFGWHLIE LLDTRNVDKT DAAQKDRAYR MLMNRKFSEE AASWMQEQRSA SAYVKILSN

### General references:

Virlogeux-Payant I., *et al* (2009) *Microbiology*. 155(Pt 5):1613-22

Kolter R., *et al.* (1996) *J Bacteriol.* 178(6):1770-3.

**Storage:** Can be stored at +4°C short term (1-2 weeks). For long term storage, aliquot and store at -20°C or -70°C.  
Avoid repeated freezing and thawing cycles

**For research use only. This product is not intended or approved for human, diagnostics or veterinary use.**



Manufactured for:

Immuno-Biological Laboratories, Inc. (IBL-America)  
8201 Central Ave. NE, Suite P, Minneapolis, Minnesota 55432, USA  
Phone: (888) 523-1246 Fax.: (763) 780-2988  
Email: [info@ibl-america.com](mailto:info@ibl-america.com) Web: [www.ibl-america.com](http://www.ibl-america.com)