

Product information



CKB, 1-381 aa

Human, His-tagged, Recombinant, *E.coli*

Cat. No. IBATGP0626

Full Name: Creatine kinase B-type

NCBI Accession No.: NP_001814

Synonyms: B-CK, CKBB

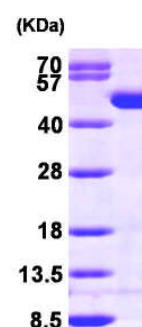
Description: CKB (Creatine kinase B-type) is a cytoplasmic enzyme involved in energy homeostasis. The protein reversibly catalyzes the transfer of phosphate between ATP and various phosphogens such as creatine phosphate. It acts as a homodimer in brain as well as in other tissues, and as a heterodimer with a similar muscle isozyme in heart. Creatine kinases provide the energy of phosphate hydrolysis necessary to drive the normal function of many cellular systems including muscle, tumor and cancer cells. Recombinant human CKB protein, fused to His-tag at N-terminus, was expressed in *E.coli* and purified by using conventional chromatography technique

Form: Liquid. In 20 mM Tris-HCl buffer (pH8.0) containing 1mM DTT, 10% glycerol

Molecular Weight: 44.8 kDa (401aa), confirmed by MALDI-TOF

Purity: > 95% by SDS - PAGE

Concentration: 1 mg/ml (determined by Bradford assay)



15% SDS-PAGE (3ug)

Sequences of amino acids:

MGSSHHHHHH SSGLVPRGSH MPFSNSHNAL KLRFPAEDEF PDLSAHNNHM AKVLTPELYA ELRAKSTPSG FTLLDDVIQTG VDNPGHPYIM
TVGCVAGDEE SYEVFKDLFD P I I EDRHGGY KPSDEHKTDL NPDNLQGGDD LDPNYVLSSR VRTGRSIRGF CLPPHCSRGE RRAIEKLAVE
ALSSLDGDLA GRYYALKSMT EAEQQQLIDD HFLFDKPVSP LLLASGMARD WPDARGIWHN DNKTFLVWVN EEDHLRVISM QKGGNMKEVF
TRFCTGLTQI ETLFKSKDYE FMWNPGLGYI LTCPSNLGTG LRAGVHIKLP NLGKHEKFSE VLKRLRLQKR GTGGVDAAV GGVFVDSNAD
RLGFSEVELV QMVVDGVKLL IEMEQRLQEQ QAIDDLMPAQ K

General references:

WARNING: THIS PRODUCT IS NOT INTENDED OR APPROVED FOR HUMAN, DIAGNOSTICS OR VETERINARY USE. USE OF THIS PRODUCT FOR HUMAN OR ANIMAL TESTING IS EXTREMELY HAZARDOUS AND MAY RESULT IN DISEASE, SEVERE INJURY, OR DEATH.

Product information



Chang EJ., *et al.* (2008) *Nat Med.* 14(9):966-72.

Debrincat MA., *et al.* (2007) *J Biol Chem.* 282(7):4728-37.

Storage: Can be stored at +4°C short term (1-2 weeks). For long term storage, aliquot and store at -20°C or -70°C.
Avoid repeated freezing and thawing cycles.

WARNING: THIS PRODUCT IS NOT INTENDED OR APPROVED FOR HUMAN, DIAGNOSTICS OR VETERINARY USE. USE OF THIS PRODUCT FOR HUMAN OR ANIMAL TESTING IS EXTREMELY HAZARDOUS AND MAY RESULT IN DISEASE, SEVERE INJURY, OR DEATH.