

Product information



B2M, 21-119aa

Human, His-tagged, Recombinant, *E.coli*

Cat. No. IBATGP0624

Full name: Beta-2-microglobulin

NCBI Accession No.: NP_004039

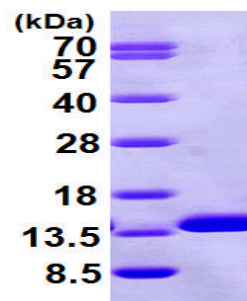
Description: Beta₂ microglobulin, also known as B2M, is a component of MHC class I molecules, Involved in the presentation of peptide antigens to the immune system. B2M is a protein found on the surface of many cells and plentiful on the surface of white blood cells. Increased production or destruction of these cells causes B2M levels in the blood to increase. This increase is seen in people with cancers involving white blood cells, but it is particularly meaningful in people newly diagnosed with multiple myeloma. Multiple myeloma is a malignancy (cancer) of a certain kind of white blood cell, called a plasma cell. B2M Testing is done primarily when evaluating a person for certain kinds of cancer affecting white blood cells including chronic lymphocytic leukemia, non-Hodgkin's lymphoma, and multiple myeloma or kidney disease. Recombinant B2M protein, fused to His-tag at N-terminus, was expressed in *E.coli* and purified by using conventional chromatography techniques.

Form: Liquid. In 20mM Tris-HCl buffer (pH8.0) containing 20% glycerol,
2mM DTT, 100mM NaCl

Molecular Weight: 14.0kDa (120aa), confirmed by MALDI-TOF

Purity: > 95% by SDS - PAGE

Concentration: 0.5 mg/ml (determined by Bradford assay)



15% SDS-PAGE (3ug)

Sequences of amino acids:

MGSSHHHHHH SSGLVPRGSH MIQRTPKIQV YSRHPAENGK SNFLNCYVSG FHPSDIEVDL LKNGRIEKV EHSDFSFSKD WSFYLLYYTE
FTPTEKDEYA CRVNHVTL SQ PKIVKWRDM

General references:

Huang WC., *et al* (2010) *J Biol Chem.* 285(11):7947-56

WARNING: THIS PRODUCT IS NOT INTENDED OR APPROVED FOR HUMAN, DIAGNOSTICS OR VETERINARY USE. USE OF THIS PRODUCT FOR HUMAN OR ANIMAL TESTING IS EXTREMELY HAZARDOUS AND MAY RESULT IN DISEASE, SEVERE INJURY, OR DEATH.

Product information



Morabito A., *et al.* (2009) *Hum Immunol.* 70(7):492-5.

Storage: Can be stored at +4°C short term (1-2 weeks). For long term storage, aliquot and store at -20°C or -70°C.
Avoid repeated freezing and thawing cycles.

WARNING: THIS PRODUCT IS NOT INTENDED OR APPROVED FOR HUMAN, DIAGNOSTICS OR VETERINARY USE. USE OF THIS PRODUCT FOR HUMAN OR ANIMAL TESTING IS EXTREMELY HAZARDOUS AND MAY RESULT IN DISEASE, SEVERE INJURY, OR DEATH.