

# Product information



## SLPI, 26-132aa

Human, His-tagged, Recombinant, *E.coli*

Cat. No. IBATGP0599

**Full name:** secretory leukocyte peptidase inhibitor

**NCBI Accession No.:** NP\_003055

**Synonyms:** Antileukoproteinase, ALK1, ALP, BLPI, HUSI, HUSI-I, MPI, WAP4, WFDC4

**Description:** SLPI is a secreted inhibitor which protects epithelial tissues from serine proteases. It is found in various secretions including seminal plasma, cervical mucus, and bronchial secretions, and has affinity for trypsin, leukocyte elastase, and cathepsin G. Its inhibitory effect contributes to the immune response by protecting epithelial surfaces from attack by endogenous proteolytic enzymes; the protein is also thought to have broad-spectrum antibiotic activity. Recombinant human SLPI, fused to His-tag at N-terminus, was expressed in *E.coli* and purified by using conventional chromatography.

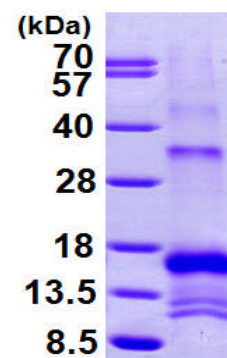
**Form:** Liquid. 20mM Tris-HCl buffer (pH8.0) containing 20% glycerol,

2mM DTT, 100mM NaCl

**Molecular Weight:** 14.0kDa (128aa) confirmed by MALDI-TOF

**Purity:** > 80% by SDS - PAGE

**Concentration:** 0.5 mg/ml (determined by Bradford assay)



15% SDS-PAGE (3ug)

### Sequences of amino acids:

MGSSHHHHHH SSSLVPRGSH MSGKSFKAGV CPPKLSAQCL RYKPEQCSD WQCPGKKRCC PDTCGIKCLD PVDTPNPTRR  
KPGKCPVTYG QCLMLNPPNF CEMDGQCKRD LKCCMGMCCK SCVSPVKA

### General references:

Rasool N., *et al.* (2010) *Clin Cancer Res.* 16(2):600-9

**WARNING: THIS PRODUCT IS NOT INTENDED OR APPROVED FOR HUMAN, DIAGNOSTICS OR VETERINARY USE. USE OF THIS PRODUCT FOR HUMAN OR ANIMAL TESTING IS EXTREMELY HAZARDOUS AND MAY RESULT IN DISEASE, SEVERE INJURY, OR DEATH.**

# Product information

---



King AE., *et al.* (2009) *Hum Reprod.* 24(3):679-86.

**Storage:** Can be stored at +4°C short term (1-2 weeks). For long term storage, aliquot and store at -20°C or -70°C.  
Avoid repeated freezing and thawing cycles.

**WARNING: THIS PRODUCT IS NOT INTENDED OR APPROVED FOR HUMAN, DIAGNOSTICS OR VETERINARY USE. USE OF THIS PRODUCT FOR HUMAN OR ANIMAL TESTING IS EXTREMELY HAZARDOUS AND MAY RESULT IN DISEASE, SEVERE INJURY, OR DEATH.**