

# Product information



## CRYM, 1- 314 aa

Human, His-tagged, Recombinant, *E.coli*

Cat. No. IBATGP0559

**Full name:** Crystallin mu

**NCBI Accession No.:** NP\_001879

**Synonyms:** THBP

**Description:** Crystallin mu, also known as CRYM, is a member of the crystallin protein family. Crystallins are separated into two classes, taxon-specific and ubiquitous. This gene encodes a taxon-specific crystallin protein. The human CRYM gene maps to chromosome 16p13.11, and encodes a protein that is expressed in neural tissue, muscle, and kidney. Unlike other crystallins, CRYM does not perform a structural role in lens tissue, but rather it binds NADPH and thyroid hormone, which indicates that it may have other regulatory or developmental functions. Recombinant human CRYM, fused to His-tag at N-terminus, was expressed in *E.coli* and purified by using conventional chromatography techniques.

**Form:** Liquid. In 20mM Tris-HCl buffer (pH 8.0) containing 1mM DTT, 10% glycerol

**Molecular Weight:** 35.9 kDa (334aa), confirmed by MALDI-TOF

**Purity:** > 95% by SDS - PAGE

**Concentration:** 1 mg/ml (determined by Bradford assay)

(kDa)

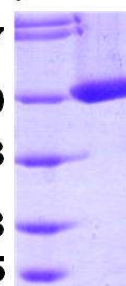
57

40

28

18

13.5



15% SDS-PAGE (3ug)

### Sequences of amino acids:

MGSSHHHHH SSGLVPRGSH MSRVPAFLSA AEVEEHLRSS SLLIPPLETA LANFSSGPEG GVMQPVRTVV PVTKHRGYLG VMPAYSAEED  
ALTTKLVTFY EDRGITSVVP SHQATVLLFE PSNGTLLAVM DGNVITAKRT AAVSAIATKF LKPPSSEVLC ILGAGVQAYS HYEIFTEQFS  
FKEVRIWNRT KENAEKFADT VQGEVRCSS VQEAVAGADV IITVTLATEP ILFGEVVKPG AHINAVGASR PDWRELDDEL MKEAVLYVDS  
QEAALKESGD VLLSGAEIFA ELGEVIKGVK PAHCEKTTVF KSLGMAVEDT VAAKLIYDSW SSGK

### General references:

**WARNING: THIS PRODUCT IS NOT INTENDED OR APPROVED FOR HUMAN, DIAGNOSTICS OR VETERINARY USE. USE OF THIS PRODUCT FOR HUMAN OR ANIMAL TESTING IS EXTREMELY HAZARDOUS AND MAY RESULT IN DISEASE, SEVERE INJURY, OR DEATH.**

# Product information

---



Kim RY., *et al.* (1992). *Proc Natl Acad Sci USA*. 89(19):9292-6.

Muaders NW., *et al.* (1988) *J Biol Chem*. 263:15462-15466.

**Storage:** Can be stored at +4°C short term (1-2 weeks). For long term storage, aliquot and store at -20°C or -70°C.  
Avoid repeated freezing and thawing cycles.

**WARNING: THIS PRODUCT IS NOT INTENDED OR APPROVED FOR HUMAN, DIAGNOSTICS OR VETERINARY USE. USE OF THIS PRODUCT FOR HUMAN OR ANIMAL TESTING IS EXTREMELY HAZARDOUS AND MAY RESULT IN DISEASE, SEVERE INJURY, OR DEATH.**