

Product information



Aldolase A , 1- 364 aa

Human, His-tagged, Recombinant, *E.coli*

Cat. No. IBATGP0477

Full name: Fructose bisphosphate aldolase A

NCBI Accession No.: NP_908930

Synonyms: ALDOA, ALDA, GSD12

Description: Fructose bisphosphate aldolase A, also known as Aldolase A is a glycolytic enzyme that catalyzes the reversible conversion of fructose-1,6-bisphosphate to glyceraldehyde 3-phosphate and dihydroxyacetone phosphate. It is found in the developing embryo and is produced in even greater amounts in adult muscle. Aldolase A expression is repressed in adult liver, kidney and intestine and similar to aldolase C levels in brain and other nervous tissue. Deficiency has been associated with myopathy and hemolytic anemia. Recombinant human Aldolase A, fused to His-tag at N-terminus, was expressed in *E.coli* and purified by using conventional chromatography techniques.

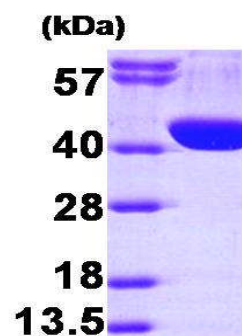
Form: Liquid. In 20mM Tris-HCl buffer (pH8.0) containing 100mM NaCl, 10% glycerol

Molecular Weight: 41.5 kDa (384aa), confirmed by MALDI-TOF

Purity: > 95% by SDS - PAGE

Concentration: 1 mg/ml (determined by Bradford assay)

Biological activity: Specific activity is > 1.5 units/mg, one unit will convert 1.0 umole of fructose 1,6-diphosphate to dihydroxyacetone phosphate and glyceraldehyde 3-phosphate per minute at pH 7.5 at 25C.



15% SDS-PAGE (3ug)

Sequences of amino acids:

MGSSHHHHH SSSLVPRGSH MPYQYPALTP EQKELSDIA HRIVAPGKGI LAADESTGSI AKRLQSIGTE NTEENRRFYR QLLLTADDRV
NPCIGGVILF HETLYQKADD GRPFPQVIKS KGGVVGIVKD KGVVPLAGTN GETTTQGLDG LSERCAQYKK DGADFAKWRC VLKIGEHTPS
ALAIMENANV LARYASICQQ NGIVPIVEPE ILPDGDHDLK RCQYVTEKVL AAVYKALSDH HIYLEGTLLK PNMVTPGHAC TQKFSHEEIA
MATVTALRRT VPPAVTGITF LSGGQSEEEA SINLNAINKC PLLKPWALTF SYGRALQASA LKAWGGKKEN LKAAQEYVK RALANSLACQ
GKYTPSGQAG AAASESLFVS NHAY

Activity Assay:

1. Prepare a 1.45 ml reaction mixture with the following concentrations: 45 mM Tris pH8.0, 0.95mM fructose 1,6-diphosphate, 0.065 mM β -nicotinamide adenine dinucleotide, 5 unit alpha-glycerophosphate

For research use only. This product is not intended or approved for human, diagnostics or veterinary use.



Manufactured for:
Immuno-Biological Laboratories, Inc. (IBL-America)
8201 Central Ave. NE, Suite P, Minneapolis, Minnesota 55432, USA
Phone: (888) 523-1246 Fax: (763) 780-2988
Email: info@ibl-america.com Web: www.ibl-america.com

Product information

dehydrogenase/triosephosphate isomerase.

2. Add 50 ul of recombinant Aldolase A protein with 1ug, 2ug in reaction mixture.
3. Record the decrease in A340nm for 5 minutes at 25C.

General references:

Pfleiderer G., *et al.* (1975) *Beitr Pathol.* 156(3):266-79.

Kishi H., *et al.* (1987) *Proc Natl Acad USA.* 84(23):8623-7.

Storage: Can be stored at +4°C short term (1-2 weeks). For long term storage, aliquot and store at -20°C or -70°C.
Avoid repeated freezing and thawing cycles.

For research use only. This product is not intended or approved for human, diagnostics or veterinary use.



Manufactured for:

Immuno-Biological Laboratories, Inc. (IBL-America)
8201 Central Ave. NE, Suite P, Minneapolis, Minnesota 55432, USA
Phone: (888) 523-1246 Fax.: (763) 780-2988
Email: info@ibl-america.com Web: www.ibl-america.com