

Product information



Annexin A4, 1-321 aa

Human, Recombinant, *E.coli*

Cat. No. IBATGP0463

Synonyms: ANX4, PIG28, ZAP36

NCBI Accession No.: NP_001144

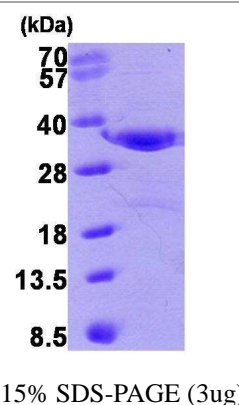
Description: ANXA4 belongs to the annexin family of calcium-dependent phospholipid binding proteins. Although their functions are still not clearly defined, several members of the annexin family have been implicated in membrane-related events along exocytotic and endocytotic pathways. Isolated from human placenta, this protein has possible interactions with ATP, and has in vitro anticoagulant activity and also inhibits phospholipase A2 activity. ANXA4 is almost exclusively expressed in epithelial cells. Recombinant ANXA4 protein was expressed in *E.coli* and purified by using conventional chromatography techniques.

Form: Liquid. 20mM Tris-HCl buffer (pH8.0) containing 20% glycerol
0.2M NaCl

Molecular Weight: 36 kDa (321aa)

Purity: > 90% by SDS - PAGE

Concentration: 1 mg/ml (determined by Bradford assay)



Sequences of amino acids:

```
MAMATKGGTV KAASGFNAME DAQTLRKAMK GLGTDEDAII SVLAYRNTAQ RQEIRTAYKS TIGRDLIDDL KSELSGNFEQ VIVGMMTPTV
LYDVQELRRA MKGAGTDEGC LIEILASRTP EEIRRISQTY QQYGRSLED DIRSDTSFMF QRVLVLSAG GRDEGNLYDD ALVRQDAQDL
YEAGEKKWGT DEVKFLTVLC SRNRNHLHV FDEYKRISQK DIEQSIKSET SGSEFEDALLA IVKCMRNKSA YFAEKLYKSM KGLGTDNTL
IRVMVSRAEI DMLDIRAHFK RLYGKSLYSF IKGDTSGDYR KVLLVLCGGD D
```

General references:

Tait JF., et al. (1992) *Genomics* **12** (2): 313-8.

Storage: Can be stored at +4°C short term (1-2 weeks). For long term storage, aliquot and store at -20°C or -70°C.

WARNING: THIS PRODUCT IS NOT INTENDED OR APPROVED FOR HUMAN, DIAGNOSTICS OR VETERINARY USE. USE OF THIS PRODUCT FOR HUMAN OR ANIMAL TESTING IS EXTREMELY HAZARDOUS AND MAY RESULT IN DISEASE, SEVERE INJURY, OR DEATH.

Product information



Avoid repeated freezing and thawing cycles.

WARNING: THIS PRODUCT IS NOT INTENDED OR APPROVED FOR HUMAN, DIAGNOSTICS OR VETERINARY USE. USE OF THIS PRODUCT FOR HUMAN OR ANIMAL TESTING IS EXTREMELY HAZARDOUS AND MAY RESULT IN DISEASE, SEVERE INJURY, OR DEATH.