

# Product information



## MAT II beta, 1- 323aa

Human, Recombinant, *E.coli*

Cat. No. IBATGP0425

**Full name:** Methionine adenosyltransferase II, beta

**NCBI Accession No.:** AAH05218

**Synonyms:** MAT2B, TGR

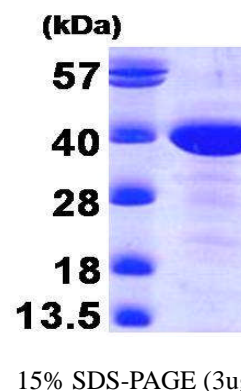
**Description:** Methionine adenosyltransferase II, beta (MAT II beta) belongs to the methionine adenosyltransferase (MAT) family. MAT II beta catalyzes the biosynthesis of S-adenosylmethionine from methionine and ATP. This protein is the regulatory beta subunit of MAT. Its expression in hepatoma cell lines may lead to increase DNA synthesis and thereby participate to cell proliferation. Recombinant human MAT II beta was expressed in *E.coli* and purified by using conventional chromatography techniques.

**Form:** Liquid. In 20mM Tris-HCl buffer (pH8.0) containing 1mM DTT, 1mM EDTA, 10% glycerol

**Molecular Weight:** 36.4 kDa (323aa)

**Purity:** > 90% by SDS - PAGE

**Concentration:** 1 mg/ml (determined by Bradford assay)



### Sequences of amino acids:

MPEMPEDMEQ EEVNIPNRRV LVTGATGLLG RAVHKEFQQN NWHAVGCGFR RARPKFEQVN LLDSNAVHHI IHDFQPHVIV HCAAERRPDV  
VENQPDAASQ LNVDAAGNLA KEAAAVGAFI IYISSDYVFD GTNPPYREED IPAPLNLYGK TKLDGEKAVL ENNLGAAVLR IPILYGEVEK  
LEESAVTVMF DKVQFSNKSA NMDHWQRRFP THVKDVATVC RQLAEKRMLD PSIKGTFHWS GNEQMTKYEM ACAIADAFNL PSSHLRPITD  
SPVLGAQRPR NTQLDCSKLE TLGIGQRTPF RIGIKESLWP FLIDKRWRQT VFH

### General references:

Steele W., *et al.* (2005) *Reprod Biomed Online*. 10(6):755-66.

LeGros L., *et al.* (2001) *J Biol Chem*. 276(27):24918-24.

**WARNING: THIS PRODUCT IS NOT INTENDED OR APPROVED FOR HUMAN, DIAGNOSTICS OR VETERINARY USE. USE OF THIS PRODUCT FOR HUMAN OR ANIMAL TESTING IS EXTREMELY HAZARDOUS AND MAY RESULT IN DISEASE, SEVERE INJURY, OR DEATH.**

# Product information

---



**Storage:** Can be stored at +4°C short term (1-2 weeks). For long term storage, aliquot and store at -20°C or -70°C.  
Avoid repeated freezing and thawing cycles.

**WARNING: THIS PRODUCT IS NOT INTENDED OR APPROVED FOR HUMAN, DIAGNOSTICS OR VETERINARY USE. USE OF THIS PRODUCT FOR HUMAN OR ANIMAL TESTING IS EXTREMELY HAZARDOUS AND MAY RESULT IN DISEASE, SEVERE INJURY, OR DEATH.**