

Galectin-3, 1-250 aa

Human, His-tagged, Recombinant, *E.coli*

Cat. No. IBATGP0414

Expression System

E.coli

Domain

1-250aa

UniProt No.

P17931

NCBI Accession No.

NP_002297

Alternative Names

CBP35, GAL3, GALBP, GALIG, LGALS2, MAC2., 35 kDa lectin, Carbohydrate binding protein 35, Galactose-specific lectin 3, Galactoside-binding protein, Galectin 3 internal gene, included, Galectin-3, Galectin3, GBP, IgE binding protein, IgE-binding protein, L 31, L 34, L-34 galactoside-binding lectin, L31, LGALS3, Laminin-binding protein, Lectin L-29, MAC 2 antigen, Lectin, galactose binding, soluble 3, Mac-2, Macrophage galactose-specific lectin, MGC105387.

PRODUCT SPECIFICATION

Molecular Weight

28.3 kDa (270aa), confirmed by MALDI-TOF.

Concentration

0.5mg/ml (determined by Bradford assay)

Formulation

20 mM Tris-HCl buffer, (pH8.0), 10% Glycerol, 1mM DTT, 0.1M NaCl

Purity

> 95% by SDS-PAGE

Biological Activity

The ED50 for this effect is less or equal to 15 ug/ml. Measured by its ability to agglutinate human red blood cells.

Tag

His-Tag

Applications

Bioactivity, SDS-PAGE

Storage Condition

Can be stored at +2C to +8C for 1 week. For long term storage, aliquot and store at -20C to -80C. Avoid repeated freezing and thawing cycles.

BACKGROUND

Description

Galectin-3 is a member of the family of animal lectins, which selectively binds beta-galactoside residues. This protein is secreted from cells by ectocytosis, which is independent of the classical secretory pathway through the

For research use only. This product is not intended or approved for human, diagnostics or veterinary use.



Manufactured for:

Immuno-Biological Laboratories, Inc. (IBL-America)
8201 Central Ave. NE, Suite P, Minneapolis, Minnesota 55432, USA
Phone: (888) 523-1246 Fax.: (763) 780-2988
Email: info@ibl-america.com Web: www.ibl-america.com

Galectin-3, 1-250 aa

Human, His-tagged, Recombinant, *E.coli*

Cat. No. IBATGP0414

endoplasmic reticulum/Golgi network. Galectin-3 has been associated with the inhibition of apoptosis and the progression of cancer. It is normally distributed in epithelia of many organs, in various inflammatory cells, including macrophages, as well as dendritic cells and Kupffer cells. The expression of this lectin is up-regulated during inflammation, cell proliferation, cell differentiation and through trans-activation by viral proteins. Recombinant Galectin-3 protein was expressed in *E. coli* and purified by using conventional chromatography techniques.

Amino acid Sequence

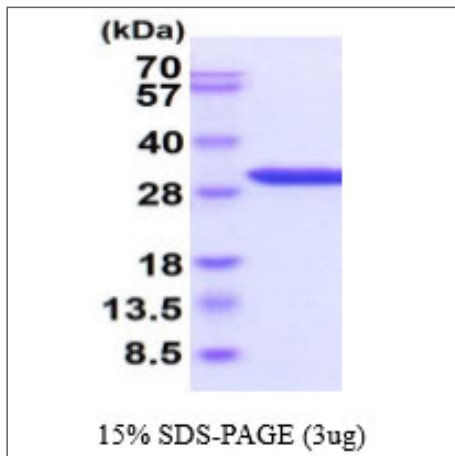
MGSSHHHHHH SGLVPRGSH MADNFSLHDA LSGSGNPNPQ GWPGAWGNQP AGAGGYPGAS
YPGAYPGQAP PGAYPGQAPP GAYPGAPGAY PGAPAPGVYP GPPSGPGAYP SSGQPSATGA
YPATGPYGAAP AGPLIVPYNL PLPGGVVPRM LITILGTVKP NANRIALDFQ RGNDVAFHFN
PRFNENRRRV IVCNTKLDNN WGREERQSVF PFESGKPFKI QVLVEPDHFK VAVNDAHLLQ YNHRVKKLNE
ISKLGISGDI DLTSASYTMI

General References

Barondes SH., et al. (1994) J Biol Chem. 269(33):20807-10.
Kadrofske MM., et al. (1998) Arch Biochem Biophys. 349(1):7-20.

DATA

SDS-PAGE



3ug by SDS-PAGE under reducing condition and visualized by coomassie blue stain

Biological Activity

The ED50 for this effect is less or equal to 15 ug/ml. Measured by its ability to agglutinate human red blood cells.

For research use only. This product is not intended or approved for human, diagnostics or veterinary use.



Manufactured for:

Immuno-Biological Laboratories, Inc. (IBL-America)
8201 Central Ave. NE, Suite P, Minneapolis, Minnesota 55432, USA
Phone: (888) 523-1246 Fax: (763) 780-2988
Email: info@ibl-america.com Web: www.ibl-america.com