

Product information



Biliverdin reductase A, 3-296 aa

Human, Recombinant, *E.coli*

Cat. No. IBATGP0377

Full name: Biliverdin reductase A

NCBI Accession No.: NP_000703

Synonyms: BLVR, BVR, BVRA

Description: BLVRA, also known as biliverdin reductase A, belongs to the gfo/idh/mocA family. This protein is an enzyme that converts biliverdin to bilirubin, converting a double-bond between the second and third pyrrole ring into a single-bond. (Bilirubin + NAD(P)+ = biliverdin + NAD(P)H) Recombinant BLVRA protein was expressed in *E.coli* and purified by using conventional chromatography techniques.

Form: Liquid. In 20mM Tris-HCl buffer (pH8.0) containing 10% glycerol

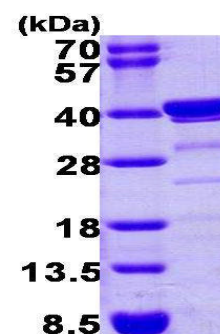
Molecular Weight: 33.3 kDa (295aa)

(Real molecular weight on SDS-PAGE will be shift up)

Purity: > 90% by SDS - PAGE

Concentration: 1 mg/ml (determined by Bradford assay)

Endotoxin Level: < 1.0 EU per 1 µg of protein (determined by LAL method)



15% SDS-PAGE (3ug)

Sequences of amino acids:

MAEPERKFGV VVVGVRGRAGS VRMRDLRNPH PSSAFLNLIIG FVSRRELGSI DGVQQISLED ALSSQEVEVA YICSESSSHE DYIRQFLNAG
KHLVVEYPMT LSLAAAQELW ELAEQKGGKVL HEEHVLLME EFAFLKKEVV GKDLLKGSLL FTAGPLEEER FGFPAFSGIS RLTWLVSLFG
ELSLVSATLE ERKEDQYMKM TVCLETEKKS PLSWIIEKGP GLKRNRYSF HFKSGSLENV PNVGVNKNIF LKQDNIFVQK LLGQFSEKEL
AAEKKRILHC LGLAEEIQKY CCSRK

General references:

Kravets A., *et al.* (2004) *J Biol Chem.* 279(19):19916-23.

Franklin E., *et al.* (2007) *Biochem J.* 405(1):61-7.

WARNING: THIS PRODUCT IS NOT INTENDED OR APPROVED FOR HUMAN, DIAGNOSTICS OR VETERINARY USE. USE OF THIS PRODUCT FOR HUMAN OR ANIMAL TESTING IS EXTREMELY HAZARDOUS AND MAY RESULT IN DISEASE, SEVERE INJURY, OR DEATH.

Product information



Storage: Can be stored at +4°C short term (1-2 weeks). For long term storage, aliquot and store at -20°C or -70°C.
Avoid repeated freezing and thawing cycles.

WARNING: THIS PRODUCT IS NOT INTENDED OR APPROVED FOR HUMAN, DIAGNOSTICS OR VETERINARY USE. USE OF THIS PRODUCT FOR HUMAN OR ANIMAL TESTING IS EXTREMELY HAZARDOUS AND MAY RESULT IN DISEASE, SEVERE INJURY, OR DEATH.