

# Product information



## CRABP1, 1-137 aa

Human, Recombinant, *E.coli*

Cat. No. IBATGP0351

**Full name:** Cellular retinoic acid binding protein 1

**NCBI Accession No.:** NP\_004369

**Synonyms:** CRABP, CRABP-I, CRABPI, RBP5

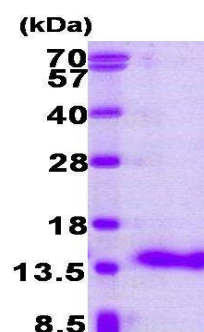
**Description:** CRABP1, also known as cellular retinoic acid-binding protein 1, is a member of specific carrier proteins for members of the vitamin A family. This protein is assumed to play an important role in retinoic acid-mediated differentiation and proliferation processes. CRABP1 is structurally similar to the cellular retinol-binding proteins, but binds only retinoic acid. It is constitutively expressed and is believed to have different functions in the cell than the related CRABP2. Recombinant CRABP1 protein was expressed in *E.coli* and purified by using conventional chromatography techniques.

**Form:** Liquid. In 20mM Tris-HCl buffer (pH8.0) containing 10% glycerol

**Molecular Weight:** 15.5 kDa (137 aa)

**Purity:** > 95% by SDS - PAGE

**Concentration:** 1.0 mg/ml (determined by Bradford assay)



15% SDS-PAGE (3ug)

### Sequences of amino acids:

MPNFAGTWKM RSENFDELL KALGVNAMLK KVAVAAASKP HVEIRQGDGQ FYIKTSTTVR TTEINFKVGE GFEEETVDGR KCRSLATWEN  
ENKIHCTQTL LEGDGPPTYW TRELANDELI LTFGADDVVC TRIYVRE

### General references:

Wang L, *et al.* (1997) *J Biol Chem*, 272(3):1541-7.

Aström A, *et al.* (1991) *J Biol Chem*, 266(26):17662-6.

**WARNING: THIS PRODUCT IS NOT INTENDED OR APPROVED FOR HUMAN, DIAGNOSTICS OR VETERINARY USE. USE OF THIS PRODUCT FOR HUMAN OR ANIMAL TESTING IS EXTREMELY HAZARDOUS AND MAY RESULT IN DISEASE, SEVERE INJURY, OR DEATH.**

# Product information

---



**Storage:** Can be stored at +4°C short term (1-2 weeks). For long term storage, aliquot and store at -20°C or -70°C.  
Avoid repeated freezing and thawing cycles.

**WARNING: THIS PRODUCT IS NOT INTENDED OR APPROVED FOR HUMAN, DIAGNOSTICS OR VETERINARY USE. USE OF THIS PRODUCT FOR HUMAN OR ANIMAL TESTING IS EXTREMELY HAZARDOUS AND MAY RESULT IN DISEASE, SEVERE INJURY, OR DEATH.**